

44 Glenora Place, Batesford, Vic 3213

House For Sale

Tuesday, 30 January 2024

44 Glenora Place, Batesford, Vic 3213

Bedrooms: 5

Bathrooms: 2

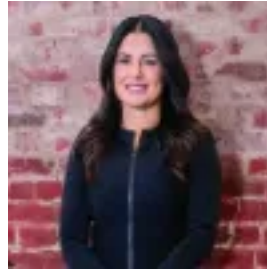
Parkings: 10

Area: 1 m2

Type: House



Aisha Coe
0439888837



Georgia Bryden
0421916691

\$1,980,000 - \$2,175,000

This exquisite residence is nestled on approx. 2.5 acres within the highly sought-after Dog Rocks Estate in Batesford, a mere stone's throw from the vibrant cityscape of Geelong. Experience the epitome of semi-rural living at its finest, as this captivating home offers an array of luxurious features. The expansive open-plan living zones provide a sophisticated backdrop for entertaining family and friends, while the spacious gourmet kitchen, adorned with stone benchtops, electric cooking, a substantial butler's pantry, stainless steel appliances, and ample storage, allows you to indulge your culinary prowess. Entertainment options are endless, a generous undercover alfresco includes a spa-equipped area and a sprawling rear deck for memorable covered gatherings overlooking the full-size swimming pool surrounded by trees and nature. With 5 bedrooms plus a home office, 2 bathrooms, 3 living areas and plenty of outdoor space this is a perfect opportunity to live in a semi-rural haven in a quiet court with few neighbours so close to the amenities of Geelong. The opulent master suite boasts stone benchtops, double vanities, and a private entrance to the spa area. This residence is further distinguished by a host of premium inclusions, such as a commercial-grade zoned heating and cooling system, an outdoor undercover theatre zone, surround sound, an 8-seater inground heated spa, laminated flooring, a children's outdoor play area, secure fencing, a substantial shed with a separate toilet, a double remote garage, full-sized swimming pool, established gardens, and a manicured cricket pitch. Embark on a lifestyle of unparalleled sophistication and comfort with this meticulously appointed home, where every detail has been carefully considered to offer the utmost in semi-rural luxury and convenience. - Ducted heating and cooling throughout - Bottled gas for stove and hot water - Electricity supplied to all buildings - Generous shed with several access points and toilet - Boundary surrounded by large trees for privacy - 10m Pool (2m deep)- Abundance of nature and wildlife - Close to Geelong CBD and access to Melbourne Freeway