

44B Medley Street, Chifley, ACT 2606

LUTON

House For Sale

Friday, 19 January 2024

44B Medley Street, Chifley, ACT 2606

Bedrooms: 4

Bathrooms: 3

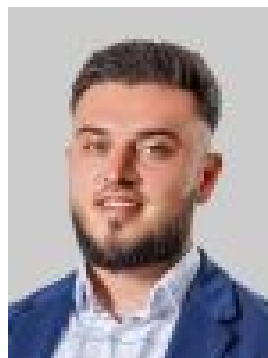
Parkings: 2

Area: 368 m2

Type: House



Adrian Giampietro
0261763420



Antonio Trajkoski
0405233828

\$1,450,000

Separately titled! No body corporate! Welcome to 44B Medley Street Chifley. A quality-built home in a leafy, established central Woden suburb. Built to a high standard with a great level of practical and quality inclusions, excellent yard size and entertaining space - this home will suit growing families perfectly. The home features a spacious open planned living area with striking timber floors, gourmet kitchen with island bench and a great sized yard perfect for entertaining plus the kids and pets. The backyard and living area face north - for all year round sunlight. There is also a stylish European laundry and full-sized bathroom downstairs for added convenience. Upstairs showcases four great-sized bedrooms with built-in wardrobes and a main bathroom with bathtub. The generous master suite provides plenty of wardrobe space and a luxurious ensuite with double shower. Completing this ideal package is the double garage with enclosed drive through access to the backyard plus in-built bench and cupboard space. Located just a couple of minutes drive to schools and shops - plus minutes to Woden Centre and Phillip, 44B Medley St Chifley is the complete package to simplify your life.

Features:- Separately titled, custom-built home- As-new condition, only 4 years old- Great sized backyard and entertaining- Tiled and covered alfresco- Four bedrooms with three bathrooms- Double garage with automatic door, plus automatic roller door to rear yard- Full bathroom downstairs plus two upstairs- High ceilings through out- Floating floors through living and dining- European laundry stone bench top- Double glazed windows and sliding doors- Toshiba reverse cycle air conditioning- Double roller blinds plus full shutter in master bedroom- Island bench with waterfall edge- 900mm gas cooktop- Large walk in pantry plus storage- Mirrored splash back- Built-in oven and microwave- Semi-frameless showers- Bathtub in main bathroom - Rainwater shower head plus shower head in ensuite - Wall hung vanities- Floor to ceiling tiles in all three bathrooms- Storage cupboards and fridge bench space in garage- Living Area: 170m² (approx.)- Garage: 41m² (approx.)- Alfresco: 15m² (approx.)- Total under roofline: 226m² (approx.)- Land size: 368m² (approx.)- Rates: \$3,216- Land tax: \$5,491- Year built: 2019