

45 Beacon Vista, Port Melbourne, Vic 3207

House For Sale

Tuesday, 30 April 2024

45 Beacon Vista, Port Melbourne, Vic 3207

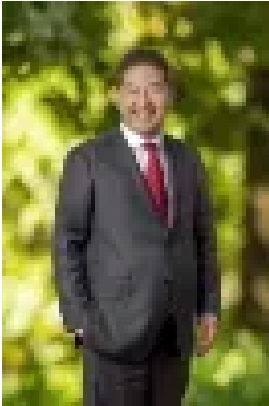
Bedrooms: 3

Bathrooms: 2

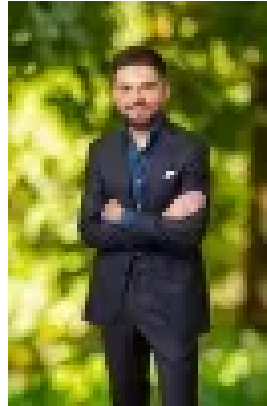
Parkings: 3

Area: 222 m2

Type: House



David Lack
0386713777



Fraser Lack
0386713777

\$1,950,000 - \$2,100,000

Nestled in the dress circle perfectly positioned opposite beautiful parkland, this exquisite 3 bedroom residence enjoys a most private and tranquil setting. Spanning across two light-filled levels and situated on a generous north-facing allotment, this immaculately-presented home offers comfort and luxury for the whole family. Upon entry, the inviting front living room welcomes you with a stunning gas fireplace, seamlessly connected to a lovely elevated dining space. The spacious kitchen is fitted with gorgeous stone bench tops and modern appliances, with an adjacent second lounge and family zone which opens out through expansive sliding doors to the beautifully landscaped courtyard that's the perfect place to entertain your family and friends. The very well optimised floorplan also provides a neat downstairs powder room and a cleverly positioned European laundry. Upstairs accommodation includes three generously sized bedrooms each with mirrored built in robes, whilst the main bedroom is enhanced by amazing proportions, a sparkling ensuite with double vanity, as well as a delightful balcony overlooking the beautiful park. Bedrooms two and three are serviced by the central 2nd bathroom, with separate shower and bath. Quality features of this stunning property include ducted heating/cooling throughout, as well as off-street parking for 3 vehicles, one in the driveway, garaging for one that also connects effortlessly through roller-door to the rear courtyard with space for an additional parking space. Located in the highly desirable and very tightly held Beacon Cove estate, only a short walk to the beach as well as much-loved Bay Street, and minutes away from ample public transport options including the 109 tram, and 234/235 bus routes, this beautiful family home offers a fantastically convenient location.