

**45 Bergamot Circuit, Griffin, Qld 4503**



**Sold House**

Sunday, 20 August 2023

45 Bergamot Circuit, Griffin, Qld 4503

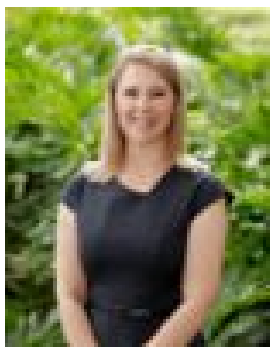
**Bedrooms: 4**

**Bathrooms: 2**

**Parkings: 2**

**Area: 405 m2**

**Type: House**



Hayley Stever  
0421275289

**\$685,000**

This modern home has been designed with clever family living in mind. Combined with the beauty and warmth, it simply feels like you have arrived home! The floorplan is extremely well designed, facilitating excellent separation and large in scale for everyone to spread out. The heart of the home is the delightful kitchen offering quality stainless-steel appliances, stone bench tops, breakfast bar, gas cooktop, walk-in pantry, and ample storage space. The kitchen overlooks the generous open plan living/dining area which leads to the undercover alfresco accompanied by a low maintenance, fully fenced yard. Living in this home is bigger and better with a second separate living area for even more space for the family! The master bedroom comes complete with a ceiling fan, air-conditioning, walk-in robe, and modern ensuite. 3 additional bedrooms are also great in size and feature ceiling fans and built-in robes. Some features you'll love:

- Open plan living/dining area complete with air-conditioning and ceiling fan
- Modern kitchen with stone benchtops, breakfast bar, quality stainless steel appliances, gas cooktop, walk in pantry & ample storage space
- Large separate carpeted living area with ceiling fan
- Master bedroom features a ceiling fan, air-conditioning and modern ensuite
- 3 additional bedrooms with ceiling fans and built-in robes
- Main bathroom with a separate bath and shower
- Double lock-up garage with internal access
- Internal laundry
- Outdoor entertaining
- Low maintenance, fully fenced yard
- Situated on a 405m<sup>2</sup> block
- Built in 2015

Local Schools: Griffin State School - Prep to year 6 Goodstart Early Learning Childcare Living Faith Lutheran Primary School Murrumba State Secondary School

Short Drive to: Murrumba Downs & Mango Hill Train Stations Bunnings & Costcolkea & Westfield Shopping Centre Restaurants, Cafes and Shops

Distances: Ikea & Westfield approx 10 min drive Redcliffe approx 20 min drive Brisbane CBD approx 35 min drive Brisbane Airport approx 25 mins Sunshine Coast approx 50 min drive

Disclaimer: Whilst every effort has been made to ensure the accuracy of these particulars, no warranty is given by the vendor or the agent as to their accuracy. Interested parties should not rely on these particulars as representations of fact but must instead satisfy themselves by inspection or otherwise. Due to relevant legislations, a price guide isn't available for properties being sold without a price or via auction. Websites may filter a property being sold without a price or via auction into a price range for functionality purposes. Any estimates are not provided by the agent and should not be taken as a price guide.