

# 45 Emerald Drive, Port Macquarie, NSW 2444

## House For Sale

Tuesday, 19 December 2023



45 Emerald Drive, Port Macquarie, NSW 2444

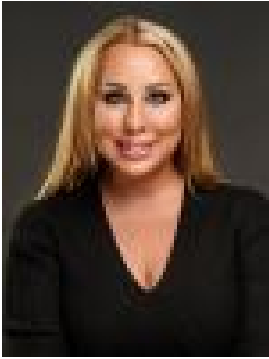
**Bedrooms: 4**

**Bathrooms: 2**

**Parkings: 2**

**Area: 726 m2**

**Type: House**



Corrine Cunningham  
0265838606



Tyson Cunningham  
0481123047

## Guide \$1,395,000-\$1,475,000

Introducing "Casa Della Brezza", a luxury coastal home located in the heart of Emerald Downs. This exquisite property is the latest project from the talented artisans at Lighthouse Design. Completely transformed from the ground up, the neutral colour palette set amongst an abundance of tropical greenery exudes luxe resort feels. The Coastal Plantation aesthetic used for the home incorporates organic materials and textures including Italian travertine stone and whitewashed oak, highlighted by hints of copper and bronze. Detailed cabinetry adorned with rattan and natural timbers are complemented by flowing white linen sheers. Upon entry via the timber boardwalk and newly landscaped front garden, you are greeted by the travertine stone wall which immediately sets the soothing tone inviting you into the home. Natural light and tropical garden views wash through every room, evoking a feel of year-round summer. The travertine stone floors throughout flow seamlessly inside to out. Bespoke pendant lighting adds to the barefoot luxe atmosphere. The master bedroom is a sanctuary, with private access to the spa deck via sliding doors. Featuring bespoke rattan built-in robes, a cozy window seat nook, and stunning ensuite complete with rain shower, travertine tiles and oversized arched mirror. The vintage arched louvre doors lead to a casual living and dining area, complete with a built-in wine bar and banquette seating. The highlight of the home is the designer kitchen, a culinary masterpiece with European appliances, custom joinery and generous butler's pantry all with timber and rattan accents adding visual interest and warmth. The kitchen and lounge spill out on to the enormous covered outdoor terrazza for year round entertaining, alongside the palm shaded timber spa deck and outdoor shower. Lush tropical gardens and lawn area create a private, serene atmosphere. The eastern wing of the home contains an additional three bedrooms, sizeable European laundry and the main bathroom, featuring a travertine wet area complete with deluxe freestanding bath and rain shower beneath a velux skylight bathing the room in natural light. Located just 3 minutes from Lighthouse Beach and within walking distance of amenities such as 18-hole golf course, shopping centre, and family friendly tavern, this property offers both elegant living and a leisurely lifestyle. Don't miss the opportunity to secure your coastal plantation hideaway in the heart of Emerald Downs.