

45 Mclean Drive, Horsham, Vic 3400

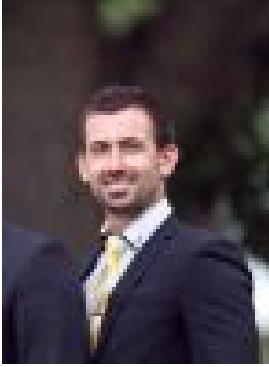
Sold Residential Land

Wednesday, 12 June 2024

45 Mclean Drive, Horsham, Vic 3400

Area: 539 m2

Type: Residential Land



Andrew Seers

0353822422

Contact agent

Located in Popular Southbank and with uninterrupted views of the wetland is this 539m² allotment ready to be built on. Boasting a 15m frontage and unrestricted by easements this allotment is perfectly suited to the construction of high-end townhouses or homes with all usual services including electricity, sewerage, water, gas and nbn optic fibre available for connection. For more information or to discuss this property further, call today!