

45 Parkway Drive, Mooloolaba, Qld 4557



Sold House

Thursday, 17 August 2023

45 Parkway Drive, Mooloolaba, Qld 4557

Bedrooms: 4

Bathrooms: 2

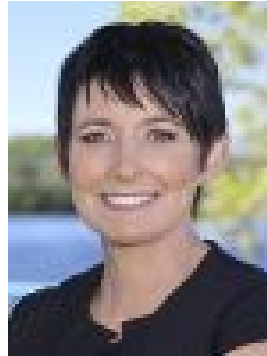
Parkings: 6

Area: 832 m2

Type: House



Hamish Bolderston
0754508000



Trudi Fernandez
0417137374

\$1,700,000

Two Mooloolaba homes on one block. Perfectly positioned in a popular part of Mooloolaba and adjoining high-quality new homes this is a unique opportunity that provides for either multigenerational living or a passive rental income. The main home features four bedrooms, and the second two-bedroom residence is entirely self-contained and separately metered. Single-level design, low-maintenance gardens and with plenty of room for a pool, this home provides a comfortable and relaxed lifestyle that is easy to maintain.- Boasting a spacious and open-plan living area and a large eat-in kitchen - Airconditioning in all bedrooms of the main house and flat- Second dwelling is less than five years old, a large 832sqm block- 9m x 5.3m shed with high access carport at the front perfect for caravan- Both homes feature expansive undercover alfresco areas- Double garage with direct entry to the main house, wide street frontage- A short walk to local shops, including Ray Jays fish shop and IGA store- Enjoy low-cost living with 8.8kw solar system in place to help minimise bills- Only 15 minutes away from Airport, Hospital, and University- Mountain Creek High and Mooloolaba Primary School catchment area- Close to your choice of the Sunshine Coasts best independent schools