

45 Siandra Drive, Kareela, NSW 2232



House For Sale

Thursday, 16 May 2024

45 Siandra Drive, Kareela, NSW 2232

Bedrooms: 5

Bathrooms: 3

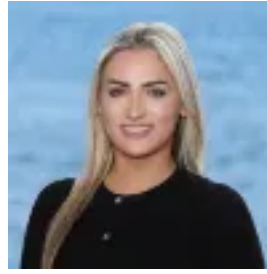
Parkings: 2

Area: 569 m2

Type: House



Adam Crawley
0295449595



Alyssa Kaly
0431818352

Auction | Price Guide \$1,750,000

Nestled in an elevated position and built with solid brick construction, this grand 5-bedroom home provides ample space for the growing family and boasts a beautiful outlook, abundant natural light, and luxurious finishes. Step inside to enjoy a meticulously designed floorplan that seamlessly combines multiple living and dining areas, creating an inviting space for diverse families. The central fully renovated kitchen stands as the heart of the home, boasting luxurious finishes, Caesar stone bench tops, and top of the line appliances. This charming property presents two light-filled balconies at the front of the home which offer panoramic district views across the valley. Towards the rear of the home, a generously sized rumpus room seamlessly connects to a spacious undercover entertaining space, perfect for hosting and relaxation. Upstairs, there are 4 spacious bedrooms separate from the expansive living areas, complemented by a main bathroom and extending out onto a large wrap-around entertaining terrace. Situated in one of Kareela's most sought-after streets close to Kareela Shopping Village, public transport, and Kareela Public School, this charming 5-bedroom home is sure to impress. - 4 light-filled bedrooms; king-size master offering a walk-in wardrobe and a private ensuite with a heated towel rack - 5th bedroom, home office, or dining area opening out the sun-filled verandah - 4 bedrooms open to an outside area - Grand kitchen featuring an integrated dishwasher, Bosch appliances, ample storage/bench space, and a pyrolytic self-cleaning oven - New bathrooms with luxurious finishes, main with a separate shower and bath - Two sunny balconies extending along the front of the home offering long district views over the valley - Year-round comfort of ducted air conditioning/heating - Internal laundry with shower and separate WC downstairs - Separate formal dining/living area and informal dining/living - Double lock-up garage with mezzanine storage - Covered entertaining area and a huge entertaining terrace at the rear of the property - Walking distance to Kareela Village, local school, golf course/Sharks social club

When looking at properties it's important to have confidence in how much you can borrow. As Ray White are partnered with Loan Market they can make this simple and easy for you. Should you wish to know your borrowing powers simply go to www.loanmarket.com.au/brokers/jason-wylie now and our Loan Market broker will be in touch.