

45 Welford Circuit, Yarrabilba, Qld 4207



Sold House

Thursday, 5 October 2023

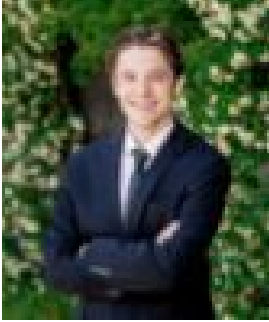
45 Welford Circuit, Yarrabilba, Qld 4207

Bedrooms: 4

Bathrooms: 2

Parkings: 2

Type: House



Riley Dunne
0424793528



Lisa Dunne
0755381555

\$570,000

Situated in a quiet street on a 313m² block, this 4-bedroom family home is perfect if you are looking for an investment property or a place to call home.* 4 bedrooms master bedroom with walk in robe and ensuite* Ceiling fans throughout* Good size open plan living and dining areas with reverse cycle air conditioning* Open plan kitchen with stainless steel appliances including dishwasher* Covered alfresco entertainment patio* Low maintenance and good size yard* Double remote lock up garage* Vacant NOW* Under 1km away from local schools for all ages* Don't miss your opportunity to secure this home* Motivated owner will consider all written offers* Perfectly positioned between Brisbane and the Gold Coast, Yarrabilba really is in the middle of it all. Just 15km* from the M1 Motorway, it's an easy drive to the region's renowned theme parks, award winning Mount Tamborine wineries and much of South-East Queensland's natural beauty.*approxPlease contact the listing agent for more details by clicking on the link above.
Disclaimer:Ray White has not independently checked any of the information we merely pass on. We make no comment on and give no warranty as to the accuracy of the information contained in this document which does not constitute all or any part of any offer or contract by the recipient. Prospective purchasers / lessees must rely on their own enquiries and should satisfy themselves as to the truth or accuracy of all information given by their own inspections, searches, inquiries, advices or as is otherwise necessary. No duty of care is assumed by Orchid Avenue Realty trading as Ray White Surfers Paradise Commercial divisions toward the recipient with regard to the use of this information and all information given is given without responsibility