

**45 Wolseley Avenue, Tacoma, NSW 2259**



**Sold House**

Monday, 6 November 2023

45 Wolseley Avenue, Tacoma, NSW 2259

**Bedrooms: 3**

**Bathrooms: 1**

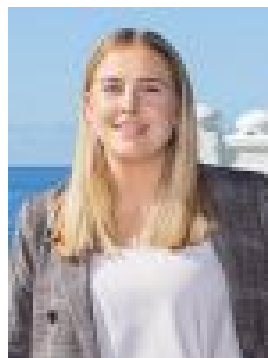
**Parkings: 1**

**Area: 1752 m2**

**Type: House**



Adrian Culpin



Brittany Culpin  
0403402243

**\$720,000**

Desirably located, only a moment from water's edge, this home is perfect for those looking to renovate or rebuild their dream home. Set atop an incredible 1,752sqm levelled block of land, just ten minutes to M1 motorway and 50 minutes to Wahroonga.- Huge 1,752sqm levelled block of land- Brilliant opportunity to renovate or rebuild your dream home- Single level home with three generously sized bedrooms- Single car lock-up garage, external bathroom- Approximately 21.3m of street frontage - R2 Low Density Residential zoning- Great investment opportunity, currently tenanted- Close to schools, shops, sporting fields and train station- A stones throw from the edge of Wyong River - 50 minutes to Wahroonga, 60 minutes to NewcastleKEY DETAILS:Council Rates \$1,647paWater Rates \$994pa