

451 Cabbage Tree Rd, Williamtown, NSW, 2318

Raine&Horne. CELEBRATING 140YRS 1883-2023

Acreage Semi-rural For Sale

Saturday, 24 June 2023

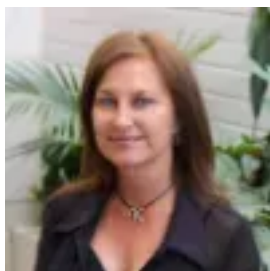
451 Cabbage Tree Rd, Williamtown, NSW, 2318

Bedrooms: 3

Bathrooms: 1

Parkings: 2

Type: Acreage Semi-rural



Kristen Miller

0249610411

FIX & COMPLETE ME ON 2 1/4 Acres!

Welcome to 451 Cabbage Tree Road, Williamstown! A must-see property for anyone looking for a peaceful and spacious location. With a land area of 9340 m²(approx) level block, this house is perfect for Tradies or anyone looking for a project to make it their own who loves those who love outdoor activities and relaxation. With 3 bedrooms, 1 bathroom & lounge room & sunroom.

The property also features a double garage, providing ample space for your vehicles and storage needs also, workshop / shed, garaging for plant machinery & equipment. Stables & dressage arena.

This home is partially renovated & waiting for the handy buyer to complete, extend & put their finishing touches on it to complete this renovation in progress.

Close to all amenities; 5 minutes drive to Newcastle Airport, 30 minutes to Nelson Bay beaches, 10 minutes to Raymond Terrace & 30 minutes to Newcastle CBD.

- 3 beds. Main with BIR, ceiling fan & A/C.
- Updated kitchen with electric cooking, dishwasher & ample cupboard space.
- Large bathroom with separate bath.
- Sunken lounge room. with A/C. Rear sunroom / living area.
- Double garage with workbench. Garden shed.
- Shed / workshop. 3 Stables. Dressage arena.
- Sitting on a level 9340m² / 2 1/4 Acres(approx) block.
- Close to Newcastle Airport, Williamstown RAAF Base, Medowie amenities, Nelson Bay, Raymond Terrace & Newcastle.

RU2 Rural Landscape zoning :

Aquaculture; Cellar door premises; Dual occupancies; Dwelling houses; Environmental protection works; Farm buildings; Health consulting rooms; Home industries; Hospitals; Neighbourhood shops; Pubs; Restaurants or cafes; Roads; Roadside stalls; Rural supplies; Self-storage units. C Environmental protection works; Farm buildings; Health consulting rooms; Home industries; Hospitals; Neighbourhood shops; Pubs; Restaurants or cafes; Roads; Roadside stalls; Rural Supplies.