

4510/220 Spencer Street, Melbourne, Vic 3000



Apartment For Sale

Friday, 15 March 2024

4510/220 Spencer Street, Melbourne, Vic 3000

Bedrooms: 2

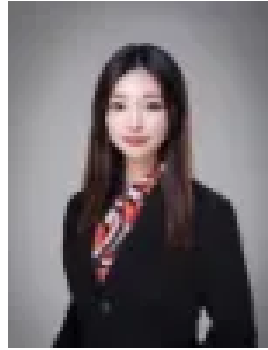
Bathrooms: 1

Parkings: 1

Type: Apartment



Jun Zeng
1300354839



Leona Jiang
1300354839

\$495,000 - \$540,000

Located in the heart of the CBD on the corner of Spencer and Lonsdale Street. The location is central to everything that makes life exciting in Melbourne. The property has a good rectangular layout and excellent sunshine with a huge balcony area. Alongside Lonsdale Street walkway to Southern Cross Station for both local and interstate trains, Skybus, Coles supermarket, and DFO Shopping Centre are at your door. Trams are serviced by the CBD Free Tram Zone. Building features all the conveniences expected in a modern building including pool, gymnasium, garden area and excellent security. The complex also provides a large outdoor entertainment terrace for the enjoyment of all residents when the party is just too big to have at home.