

457 The Entrance Road, Erina Heights, NSW 2260



Acreage For Sale

Wednesday, 28 February 2024

457 The Entrance Road, Erina Heights, NSW 2260

Bedrooms: 5

Bathrooms: 3

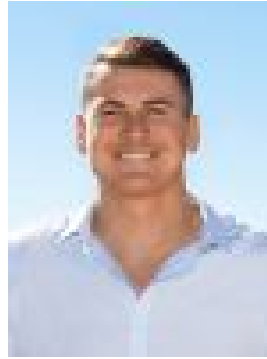
Parkings: 3

Area: 1 m2

Type: Acreage



Mat Steinwede
0243844566



Jordan Bulmer
0243844566

Auction

A peaceful oasis hidden in the quiet of Puddle Duck Lane. This luxury family entertainer is immersed in abundant sunlight and the idyllic privacy of beautiful park-like surrounds. It sprawls over 2.5 acres, showcasing the ultimate tranquil indoor/outdoor living, while also being minutes to top tier schools, beaches and shopping.- Impeccable interiors blanketed in spotted gum timber floors- High ceilings and cedar glass doors enhance space and flow- Canadian maple/stone kitchen with gas cooktop and double oven- Four lavish bedrooms, separate teenagers retreat with bathroom- Two dedicated living areas, three luxuriously presented bathrooms - Full sized tennis court amid sprawling lush grounds- In-ground pool with spa, gazebo and scope to add solar heating- Large, fenced paddock with shed, perfect for horses or hobbies- Attached lockable garage, plus additional parking with electric gated entry- Located minutes' drive to Erina Fair, top tier schools and beaches

KEY DETAILS: Council Rates \$4,291pa Water Rates \$373pa