

**45a Glebe Street, Glebe, NSW 2037**



**Terrace For Rent**

Monday, 13 May 2024

45a Glebe Street, Glebe, NSW 2037

**Bedrooms: 3**

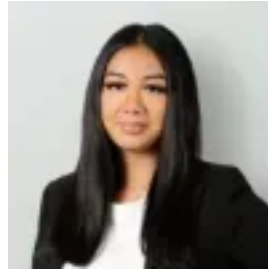
**Bathrooms: 1**

**Parkings: 1**

**Type: Terrace**



David Ibanez  
0289885688



Taleisha Georges  
0289885688

**\$1065 - Marketed by David Ibanez pw**

Nestled only footsteps from Glebe Point Road's bohemian village with its thriving arts scene, superb cafes and cosmopolitan eateries, this dual level home is ideally located for those looking to enjoy the convenient city fringe lifestyle on offer. Just over 2kms to the CBD and an easy walk to Sydney University. Broadway's retail hub is only around the corner as is Franklyn Street Playground and Wentworth Park. Three generous bedrooms located on first floor, all with built in robes, timber floors Master bedroom with enclosed balcony, great work from home area Spacious separate living upon entry Well presented kitchen with dishwasher adjoining dining area Rear paved private courtyard, great for entertaining Secure lock up garage accessed via rear lane, as well as pedestrian access Neat and tidy main bathroom with separate shower and bathtub Internal laundry Guest W.C. on ground floor