

# 46/8 Crewe Pl, Rosebery, NSW 2018



## Apartment For Rent

Monday, 13 May 2024

46/8 Crewe Pl, Rosebery, NSW 2018

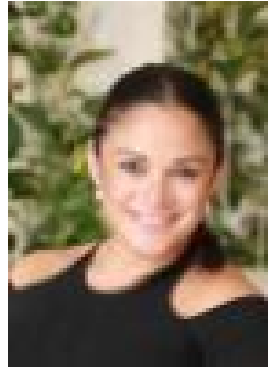
**Bedrooms: 1**

**Bathrooms: 1**

**Type: Apartment**



Qimmy Adam



Jo Franks

0424584007

**\$850 per week**

Qimmy Agency is presenting this sleek one-bedroom designer apartment in a development that embodies old-world charm coupled with new-world innovation. The 'Burcham' is a visionary development that has challenged conventions with its environmental approach and cutting-edge design and technology. It is perfectly positioned in the heart of Rosebery, with convenience at your doorstep. Green Square train station is just approximately 1km away, and fantastic cafes, sports ground facilities, and parklands are all within a short distance of your new home. This apartment comes with futuristic technology, coupled with sustainable living, including: ' Open plan living and dining and perfect flow to a sunny balcony, which is great for entertaining.' Beautiful timber floors' Carpeted bedroom with built-in wardrobe' Designer kitchen with Miele appliances' Spacious bathrooms' Internal laundry with Fisher and Paykel dryer' One storage cage' Biometric (fingerprint recognition) keyless apartment access' Rainwater recycling system' Electric car charging bays' Rooftop solar farm resulting in lower energy charges' Secure visitor car spaces' Beautiful 'Durie Design' common edible gardens' Rooftop cinema and entertainment area Please contact agent for private inspection or more information. We have, in preparing this document, used our best endeavours to ensure that all the information contained in this document is true and accurate, but accept no responsibility and disclaim all liability in respect of any errors, omissions, inaccuracies or misstatements contained in this document. Prospective tenants should make their enquiries to verify the information contained in this document. Property Code: 145