

46 Ferry Avenue, Beverley Park, NSW 2217



Sold House

Thursday, 4 April 2024

46 Ferry Avenue, Beverley Park, NSW 2217

Bedrooms: 5

Bathrooms: 3

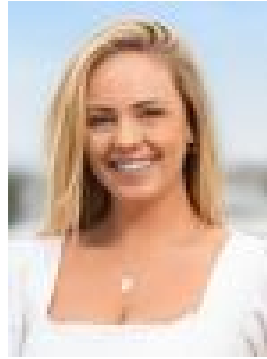
Parkings: 2

Area: 508 m2

Type: House



Marc Warren
0295293633



Sarah Foetschl
0295293633

\$2,510,000

An expansive haven commanding fairway views right across Beverley Park Golf Club, this updated brick home promises an unrivalled entertainers' lifestyle. It's on a level 508sqm block in a convenient locale, a walk to parks, shops and public transport- Attractive interiors showcase new carpet and fresh paint- Spacious lounge, bright living room and separate dining room- Large covered entertaining area and sizeable granny flat- Sunlit swimming pool, mature gardens and sprinkler system- Modern stone kitchen features gas cooking and dishwasher- Four bedrooms with built-ins, private study flexible as fifth- Three family bathrooms, upstairs complete with spa bath- Air conditioning, fireplace, storage, shed and double garage- Perfect opportunity for families as well as upsizers alike- Near St George Hospital, Carlton Station, Sydney Airport and CBD