

46 Sammarah Road, Edmondson Park, NSW 2174



Sold House

Tuesday, 26 September 2023

46 Sammarah Road, Edmondson Park, NSW 2174

Bedrooms: 5

Bathrooms: 3

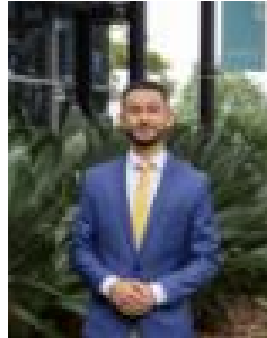
Parkings: 2

Area: 363 m2

Type: House



Tim Aaron
0434059820



Alejandro ' Nagamine
0404115515

\$1,330,000

Welcome to 46 Sammarah Road, a stunning family home located in the heart of Edmondson Park. This Modern home offers the perfect blend of comfort and contemporary design. Situated just minutes away from all local schools, shops and public transport this property offers a perfect opportunity for a convenient lifestyle. As you step inside this exquisite home you will be impressed by the open-plan layout that seamlessly connects the living, dining, and kitchen area. Creating a spacious and inviting atmosphere, that is perfect for enjoying quality time with your family. Stepping outside, you'll discover that there was no expense spared in creating this resort style entertaining area, that provides a peaceful oasis for outdoor activities and gatherings. With a patio that offers a retractable roof and eco decking you will be able to unwind while enjoying the fresh air. Other features Include: * Five generous sized bedrooms with built in wardrobes to four * Large walk in wardrobe and three way ensuite to master bedroom * Open plan family and dining * Formal lounge room * Modern kitchen offering gas cooking, stainless steel appliances, glass splashback, breakfast bar, walk in pantry and an abundance of bench and cupboard space * Main bathroom with bath and separate toilet * Upstairs living with balcony access * Internal laundry * Additional bathroom downstairs * Downlights throughout * Ducted air conditioning * Undercover decked patio perfect for entertaining * Spa * Amazing gardens * Solar panels * Double lock up garage with internal access * Sitting on a 363.4sqm block of land Location: * Approx 550m to St Francis Catholic College * 1.0km to Clermont Park * 1.0km to Edmondson Park Public School * 1.7km to Edmondson Park Station * 1.9km to Ed. Square Shopping Centre * 2.4km to St Catherine of Siena Primary School Prestons * 2.7km to John Edmondson High School Call today for further information!