

47 Daffodil Crescent, Wallan, Vic 3756



Sold Residential Land

Friday, 6 October 2023

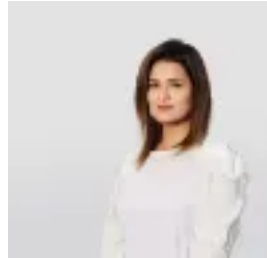
47 Daffodil Crescent, Wallan, Vic 3756

Area: 1375 m2

Type: Residential Land



Love Sharma
0430534802



Samaira Ahuja
0384689900

Contact agent

SOLD BY LOVE SHARMA 0430 534 802 & SAMAIRA AHUJA 0416 382 477 HOCKINGSTUART EPPING
The perfect blank canvas to build a modern masterpiece (STCA), this significantly sized allotment of approximately 1375 square metres is quietly positioned in a highly sought-after location. Bordered by established high-end residential homes, it's easy to envision the possibilities to custom design your family's future enhanced by stunning views of Melbourne's CBD and the surrounding countryside. Moreover, the wide 25-metres frontage (approx.) is sure to further inspire this outstanding opportunity to bring your vision to life. Cleared and ready to host the home of your dreams, this enviable slice of real estate is conveniently located in the Springridge Estate close to Wallan Primary School, Wallan Secondary College, Wallan Station, bus stops, Wellington Square Shopping Centre, Springridge Dog Park, Wallan Recreational Reserve and Hume Freeway. Contact Love Sharma 0430 534 802