

**47 Evesham Drive, Point Cook, Vic 3030**



**House For Sale**

Wednesday, 15 May 2024

47 Evesham Drive, Point Cook, Vic 3030

**Bedrooms: 5**

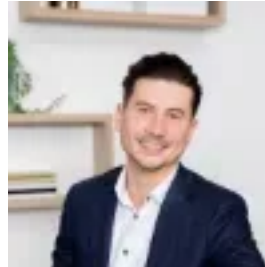
**Bathrooms: 3**

**Parkings: 2**

**Type: House**



Kristy Wang  
0393949000



Luciano Xhuti  
0393949000

## Contact Agent

This remarkable and expansive resort-style property boasts modern architecture and amenities designed for the entire family to relish. Its allure captivates from the instant you step inside. Meticulously crafted to the highest standards with lavish fixtures and fittings, the outcome is truly remarkable.

**The B.est** • Multiple spacious living zones across two levels. • Downstairs master bedroom with walk-in robe and stylish en suite. • An additional master bedroom downstairs with extra-large shower room and built in robe. • Modern kitchen neutral toned kitchen with quality stainless steel appliances, stone benchtops plus a walk in pantry. • Remaining bedrooms are all light filled, whilst being serviced by the well-appointed central bathroom with a stunning single standing bath.

**The R.est** • A convenient upstairs Rumpus room. • Glass sliding doors lead out to the beautifully designed low maintenance alfresco area. • Features include double car garage with internal access, high ceilings, ducted heating, cooling, contemporary neutral décor and colour scheme, quality flooring, stone benchtops, niche walls in the shower, window furnishings, downlights, plus many more luxury inclusions throughout.

In a location like no other, conveniently situated close to parks and playgrounds, childcare and schooling, shopping and dining plus easy freeway access this first class property offers an excellent buying opportunity – be quick to inspect.

Note: Information contained on any marketing material, website and all other portals should not be relied upon. You should make your own enquiries and seek your own independent advice in relation to any property advertised. Physical inspections are always recommended prior to any purchase.