

# 47 Neilson Street, Edgeworth, NSW 2285



## Sold House

Tuesday, 20 February 2024

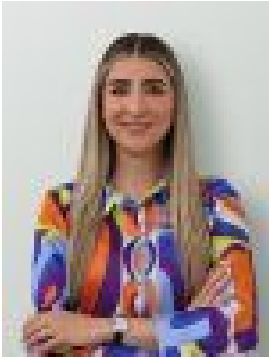
47 Neilson Street, Edgeworth, NSW 2285

**Bedrooms: 2**

**Bathrooms: 1**

**Area: 328 m2**

**Type: House**



Ana Benitez  
0401266799

**\$645,000**

Creating a stylish, modern retreat in a wonderfully convenient location, this beautifully renovated two-bedroom home reveals an abundance of flexible living space you will adore spending time in. As versatile as you need it to be, the interior flaunts sophisticated finishes within its effortless floorplan. Gorgeously presented, the kitchen is a particular highlight, offering informal breakfast bar dining overlooking the cosy front living area. Further living space is provided in the connecting retreat, which could also create a third studio-style bedroom. Enjoy a little alfresco relaxation? Offering a lovely spot to relax and entertain, the rear deck looks out over the grassy yard, where you find another of the property's superb bonus spaces: its multipurpose converted garage, which could function as a home gym or office.- Effortless two-bedroom home well situated in very welcoming neighbourhood- Large front doors create a statement as they invite you inside- Modern interior reveals beautiful neutrals, complemented by refined design- Front living space is overlooked by tastefully appointed kitchen boasting great breakfast bench, quality cabinetry, and stainless-steel gas stove and electric oven- Connects to perfectly flexible open-plan living space or third studio-style bedroom- Two generous bedrooms at front, serviced by tidy bathroom with shower-over-corner-spa-bath- Split-system AC in both living spaces assist in keeping home comfortable year-round- Rear deck offers relaxed alfresco entertaining overlooking private grassy yard with shed- Freestanding garage converted to a multi-purpose home gym or office with air conditioning unit- Additional features include solar, water control and water temperature control system- Easy-to-maintain block with space at side of home, so it still feels a comfortable distance from neighbouring homes- Fantastic location close to nearby McDonalds, Edgeworth Tavern and Edgeworth shops- Stockland Glendale is also moments away, as is zoned Edgeworth Public School- Nearby walking track offers lovely area to decompress where you can spot kangaroos- Access nearby link roads for easy travel to Newcastle, Kurri and north and south via M1- Conveniently located on direct transport routes to the University, Charlestown, Kotara, Cardiff Railway Station and local shopping precincts