

# 471 Blaxland Road, Denistone East, NSW 2112

## Sold Duplex/Semi-detached

Monday, 14 August 2023

STONE

471 Blaxland Road, Denistone East, NSW 2112

Bedrooms: 5

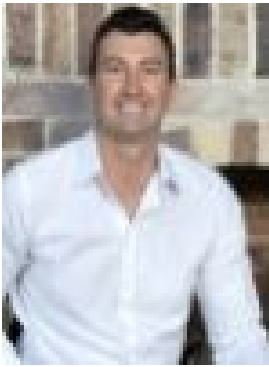
Bathrooms: 3

Parkings: 2

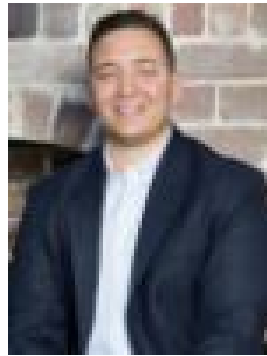
Area: 350 m2

Type:

Duplex/Semi-detached



Jason Segon  
0288757845



James Sarzano  
0410155496

## Contact agent

Boasting a modern design with easy-flow floorplan, this near-new duplex is located within a private lane off Blaxland Road and offers a whisper quiet and private setting. Showcasing a sleek open plan design with high ceilings, two spacious living zones and high-end contemporary finishes. The block features a highly sought-after north to rear aspect with an abundance of natural light combined with the creative use of skylights and glass infuses through the entire home. Located within a short stroll to city buses, in the esteemed Denistone East Public School catchment and has easy access to parks, Denistone train station, Midway shops and Top Ryde City.- Generous living and dining room for idyllic entertaining, flows to the terrace- Covered outdoor terrace enhanced with two skylights and a stone bench top- Sun drenched level backyard embraces a relaxing leafy outlook- Bold staircase with designer lighting, upper level living room and balcony- Gourmet Caesarstone and gas kitchen, Miele appliances and butlers' pantry- Kitchen boasts ample bench space, a breakfast bar and Miele dishwasher- Guest bedroom, beautiful double bedrooms providing built-in wardrobes- Master bedroom with walk-in robe/dressing table and ensuite- Bathrooms on both levels with natural tones and on-trend tapware- Ducted air conditioning, intercom and automatic garage with internal entry