

48 Blue Horizons Way, Pakenham, Vic 3810



Sold House

Wednesday, 11 October 2023

48 Blue Horizons Way, Pakenham, Vic 3810

Bedrooms: 4

Bathrooms: 2

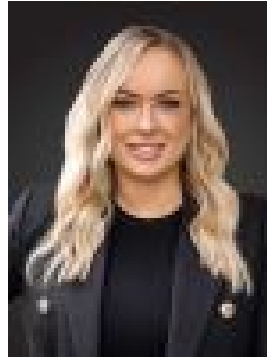
Parkings: 2

Area: 448 m2

Type: House



Tahnee Morgan
0410029953



Terri Fellows
0400573483

\$625,000

Delivering a modern functional floorplan and a set close to all amenities one would desire, this residence is sure to impress those looking for a family home, their first home or a savvy investment opportunity. On entry, the nice wide entry will set the tone, which flows through to light and bright master bedroom, offering a walk-in robe and ensuite with double vanities, tiled shower, and toilet, while the remaining three bedrooms boast built in robes are conveniently serviced by the main bathroom, bath, shower, separate toilet, laundry, and secondary living zone, making this the perfect space for the family to enjoy. The kitchen, living and meals zone, sits in a central position where the chef of the household is bound to be impressed with plenty of bench space, dishwasher, breakfast bar, overhead cabinetry, walk in pantry and a 900mm stainless steel cooktop with a 900mm opening for you to add your oven. Glass sliding doors open from the second lounge and out to the patio, where endless opportunities lie for you to further enhance it with a pergola/outdoor entertaining area and still leaving plenty of rooms for the kids and pets to play. Additional benefits include ceiling fans throughout, ducted heating, split system cooling, colour bond fence, 2000L water tank, internal and external access, and double remote-controlled garage. With all amenities at your finger's tips – you are only minutes away from Heritage Springs Shopping Complex where you have many eateries available, Coles, Pakenham Springs Primary School, daycare's, kindergartens and easy access to the M1 freeway. For more information on this home please contact Terri 0400 573 483 | Tahnee 0410 029 953 or we look forward to seeing you at our next inspection. Property Code: 322