

**48 Crossman Drive, Croydon Hills, Vic 3136**



**Sold House**

Monday, 14 August 2023

48 Crossman Drive, Croydon Hills, Vic 3136

**Bedrooms: 4**

**Bathrooms: 2**

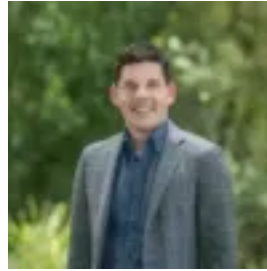
**Parkings: 2**

**Area: 763 m2**

**Type: House**



Neo Wei  
0398706211



Jacob McGlinchey  
0398706211

**\$1,130,000**

Positioned on a sweeping 763sqm corner block, with additional access from tranquil Edwina Court, this spacious single level home offers an array of exciting future possibilities. With contemporary updates and a generous floorplan ideal for growing families, the expansive 763sqm block also presents potential for those looking to redevelop (STCA). Superbly situated mere metres from lush Narr-Mean bushland and Croydon Hills Walk, the home is also set within easy walking distance of buses, and moments from Yarra Valley Grammar, Luther College, Croydon Hills Primary and Good Shepherd Lutheran Primary School. With both Chirnside Park Shopping Centre and Eastland within easy reach, the location is also close to Croydon Station and shopping. At the entry, a spacious open plan living and dining area boasts abundant floor-to-ceiling windows, bathing the home in natural light and creating an inviting sense of space throughout. A generous separate family room flows seamlessly out to an oversized undercover entertaining terrace, ideal for effortless large-scale entertaining and year-round outdoor living. Adjacent, established gardens include mature citrus trees and standard roses. A skylit kitchen boasts stainless steel appliances including a 900mm gas cooktop and Bosch dishwasher, good storage space, and a breakfast bar for casual dining. Overlooking colourful manicured gardens through an elegant bay window, the master bedroom includes a walk-in wardrobe and fully-tiled contemporary ensuite with frameless glass waterfall shower. Three additional bedrooms are each equipped with built-in wardrobes, and are complemented by a bright renovated central bathroom with large stone vanity, floor-to-ceiling tiling, a frameless glass waterfall shower, and a deep separate bathtub. Featuring gas ducted heating, split system air conditioning, a full laundry with direct outdoor access, external shade blinds, security screen doors and a garden shed, the home also includes a substantial lock-up workshop, and a double carport plus additional off-street parking.