

**48 Leemak Crescent, Berwick, Vic 3806**



**House For Sale**

Tuesday, 11 June 2024

48 Leemak Crescent, Berwick, Vic 3806

**Bedrooms: 4**

**Bathrooms: 2**

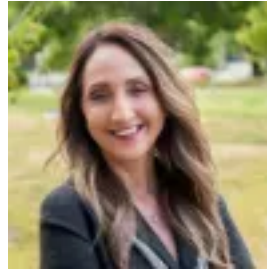
**Parkings: 2**

**Area: 1005 m2**

**Type: House**



Debbie Brettner  
0390887488



Julie Petty  
0390887488

**\$1,380,000 - \$1,430,000**

Step into this dream family home, an immaculate four-bedroom custom build perched upon a hill in Berwick's remarkable Bellbird Estate. This north-side gem combines the finest in living with sweeping views and a striking split-level design. It offers clever family-friendly zoning with three spacious living rooms, four generously sized bedrooms, and beautiful natural light streaming through, surrounded by lush greenery. The newly appointed kitchen is breathtaking in its design, boasting white gloss soft-close cabinetry, floor-to-ceiling storage, and modern matte black tapware. Sleek dual ovens and an induction cooktop are set against a cement-look grey splashback, blending practicality with style. Stone benchtops enhance the quality of the design, allowing you to bask in its functionality while overseeing the home's central zones. A rear rumpus room offers privacy and a chance to retreat with new plush carpet, modern downlights, and views of a beautifully landscaped Australian Native backyard. Enjoy the serenity here without lifting a finger - a fully automated drip system sprinkler takes care of the gardens while you relax to the sounds of a babbling water feature. The sprawling deck, incredible northern views, and neighbouring parkland add to the tranquillity. An undercover pergola with ceiling fans ensures comfort in all seasons. The master suite boasts not only a walk-in robe but also a gorgeous private ensuite equipped with a bathtub. The main bathroom, situated near the home's three large rear bedrooms, is equally impressive. Blockout blinds, an internal alarm system, ducted heating, evaporative cooling, and split system cooling provide year-round comfort, while a double car remote access garage and ample off-street parking completes the package. Located in the highly revered setting of Berwick's northern side, this home is close to Timbarra P-9 College, Harkaway Primary School, and Berwick Secondary College. The Parkhill Plaza shopping precinct and all the delights of Berwick Village are also nearby. Gems of this nature are rare, be sure to take the opportunity to make this home part of your family's next chapter. Photo I.D required at all inspections.