

48 Railway Crescent, Broadmeadows, Vic 3047



House For Sale

Wednesday, 22 November 2023

48 Railway Crescent, Broadmeadows, Vic 3047

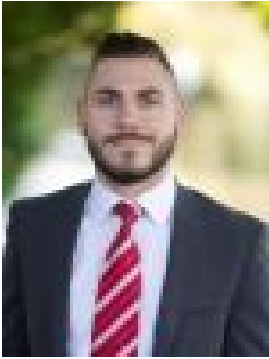
Bedrooms: 3

Bathrooms: 1

Parkings: 3

Area: 1068 m2

Type: House



Daniel Imbesi
0393060422

\$795,000 - \$870,000

Situated in one of Broadmeadow's most sought-after pockets only 250m (approx.) from Broadmeadows Station and 700m (approx.) from Broadmeadows Central shopping centre is this fantastic development site with approved planning permit for 6 new dwellings! Not to mention we are surrounded with many local schools, and parklands making this a fantastic opportunity for developers to invest. - Permit issued in June 2023- Unit 1: Street facing 3 bedroom, 2 bathroom townhouse with a double garage – 16.57sq (approx.)- Unit 2: 2 bedroom, 1 bathroom townhouse with 2nd living area upstairs and a single garage – 11.94sq (approx.)- Unit 3: 2 bedroom, 1 bathroom townhouse with 2nd living area upstairs and a single garage – 11.94sq (approx.)- Unit 4: 2 bedroom, 1 bathroom townhouse with 2nd living area upstairs and a single garage – 12.59sq (approx.)- Unit 5: 2 bedroom, 2 bathroom townhouse with a study nook and a single garage – 13.34sq (approx.)- Unit 6: 3 bedroom, 2 bathroom townhouse with a study nook, single carport and an off street car space – 13.45sq (approx.) LOCATION BENEFITS:- 250m (approx.) to Broadmeadows train station- 700m (approx.) to Broadmeadows Central shopping centre- 700m (approx.) to St Dominic's Primary School- 850m (approx.) to Penola Catholic College- 950m (approx.) to Broadmeadows Aquatic & Leisure Centre- Broadmeadows is located 16km's North of the CBD with terrific City Link, ring road and airport access