

**48B Leach Highway, Wilson, WA 6107**

**Sold Residential Land**

Monday, 14 August 2023

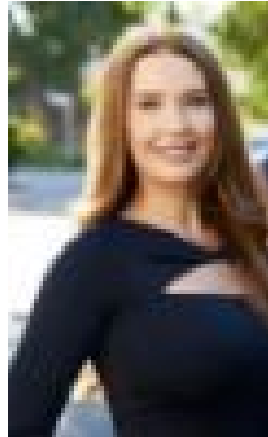
48B Leach Highway, Wilson, WA 6107

Area: 454 m2

Type: Residential Land



Ryan Smith  
0893883911



Ellissa Dohnt  
0893883911

**\$332,000**

What we love is the endless potential accompanying these two side-by-side 454sqm (approx.) blocks of vacant land that leave more than enough space for you to build a modern two-storey home – or two – that will eventually provide you with a great rental return or excellent accommodation for students, with both lots being nestled very close to Curtin University. Lush local parklands, the river, shopping centres, other major arterial roads and public-transport options – absolutely everything is within arm's reach of this sublime location. Start drawing up the plans right away, as this is one very special opportunity.

**What to know**

Features of these premium parcels of Wilson real estate include, but are not limited to;

- Two 454sqm (approx.) side-by-side blocks of vacant land
- 78sqm (approx.) of common property
- The blocks are titled and all services are installed
- The zoning is R25
- Close to Wilson Primary School, Curtin University and Waterford Plaza Shopping Centre
- Easy access to Manning Road and the vibrant Albany Highway commercial, café and restaurant precinct
- Minutes away from Canning River Regional Park, beautiful Wilson Park and Westfield Carousel Shopping Centre

Dare to dream about an exciting future that lies right here for you. The world is very much your oyster!

**Who to talk to**

To find out more about this property, you can contact agent Ryan Smith 0423 490 856 or by email at [rdsmith@realmark.com.au](mailto:rdsmith@realmark.com.au). \*Please be aware that the advertised price is per block.