

49/26 Radke Road, Bethania, Qld 4205

Sold House

Wednesday, 10 April 2024



49/26 Radke Road, Bethania, Qld 4205

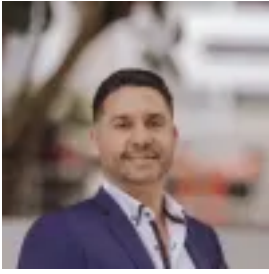
Bedrooms: 4

Bathrooms: 2

Parkings: 2

Area: 350 m2

Type: House



Tulio Fontes
0756611782



Rodrigo Themudo
0756611782

\$610,000

Constructed in 2022 with today's families in mind, this home offers everything you've been searching for and more. Also Perfect for investors this chic 4-bedroom residence is located right between Brisbane and the Gold Coast cities that will host the 2032 Olympics in Australia. Beautifully designed to provide spacious open-plan living, along with the convenience and privacy of a self contained separate studio downstairs, complete with its own private backyard. With an elegant and practical design, this home is equipped with high-quality fixtures throughout. The spacious kitchen, featuring stone countertops, ample storage space including a walk-in pantry, and leading-brand appliances, is perfect for cooking up delicious meals.

STUDIO DOWNSTAIRS:

- Open Plan with air-con and ceiling fan
- Built-in Wardrobe
- Gourmet kitchen with stone bench and stainless-steel appliances - including dishwasher
- Separate access to the fully fenced backyard

UPSTAIRS:

- 3 bedrooms – All with built-in wardrobes and ceiling fan
- Open plan living area with air-con
- Gourmet kitchen with stone bench and stainless-steel appliances - including dishwasher
- Walk-in pantry
- Double lock up garage
- Fully fenced backyard

Land Size 350m² Year Built 2022 Body corporate fees - approx. \$16/Week Leased until 23/06/25 for \$610,00

This is a free standing home with the benefits of a complex offering great entertainment options for families, including a swimming pool and BBQ area for residents to enjoy. Bethania is in a perfect location, allowing you to experience the best of South East Queensland. You're just a short drive from the M1 Motorway, connecting you to Brisbane and the Gold Coast, both only 40 minutes away. Shopping is convenient at the Logan Hyperdome, which is also close by. Here, you can find entertainment facilities like cinemas and children's activities, as well as plenty of restaurants and cafes to explore. With its fantastic location and amenities, this amazing home won't stay on the market for long.

- 2 minutes from Bethania Aquatic and Community Centre
- 2 Minutes from Bethania Train Station
- 4 minutes from Bethania Lutheran Primary School
- 6 Minutes from Waterford Plaza
- 9 Minutes from Marsden State High School
- 10 Minutes from Griffith University - Logan Campus
- 18 Minutes from Logan Hyperdome Shopping Centre
- 35 Minutes from Brisbane CBD
- 40 Minutes from the Gold Coast

***IMPORTANT* WHILST EVERY CARE IS TAKEN IN THE PREPARATION OF THE INFORMATION CONTAINED IN THIS MARKETING, Grow&Co Property Agents WILL NOT BE HELD LIABLE FOR ANY ERRORS IN TYPING OF INFORMATION. ALL INFORMATION IS CONSIDERED CORRECT AT THE TIME OF ADVERTISING.**