

4A Patten Court, Newtown, Vic 3220

Sold House

Monday, 9 October 2023

4A Patten Court, Newtown, Vic 3220

Bedrooms: 4

Bathrooms: 3

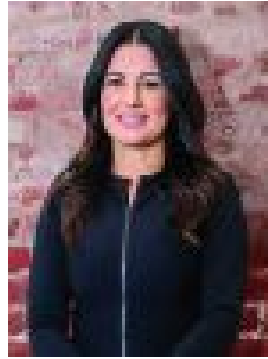
Parkings: 2

Area: 397 m2

Type: House



David Cortous
0416164336



Candice Costoso
0431577870

Contact agent

Newtown is known for prestige and opulence and 4A Pattern Crt delivers in spades from its beautiful interiors through to the large view across Queens Park and the Barwon River. Architecturally designed and masterfully crafted this luxurious residence showcases an individual and distinctive style that complements the landscape. Refined with exquisite styling this stunning residence features a tailor-made staircase framed with glass, and large living spaces with beautiful outdoor alfresco areas taking in the breathtaking view. The spotted gum flooring is right at home and is complemented with a neutral palette reflecting loads of light that flows from the hallway to the spacious open-plan living. At every scale the interiors have been considered for a daily life of ease, seen in the generously proportioned master bedroom with a walk-in robe complete with handsome joinery and an ensuite that delivers the quality you would expect. The elegant kitchen is the centrepiece of the living room and is superbly appointed with striking stone bench tops, Smeg appliances and the best of Liebherr intergraded fridges and freezers. The remaining three bedrooms are scaled to meet the home requirements, one boasting a full ensuite and walk-in robe giving the occupants the option of the master bedroom either on the ground level or above. The main bathroom is scaled to meet the needs of a family unit with floor-to-ceiling tile work, a freestanding bath, and is finished with distinct luxury. The second living area upstairs captures the million-dollar views across the western landscape and is accompanied by a brilliant balcony perfect to relax with an evening drink. The home has a real sense of warmth and welcome and is delivered with the very best of fixtures, fittings, and all mod cons, including heating/cooling, security, electric blinds, solar and much more. - Architecturally designed with million-dollar views- Four bedrooms and three bathrooms- Multiple living zones- Extensive outdoor entertaining- Walking distance to Geelong's best private schools