

5/1 Montrose Street, Ashwood, Vic 3147



Townhouse For Sale

Friday, 31 May 2024

5/1 Montrose Street, Ashwood, Vic 3147

Bedrooms: 3

Bathrooms: 2

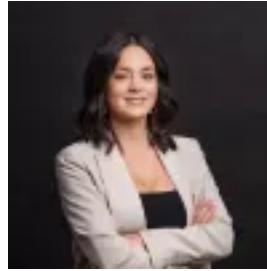
Parkings: 2

Area: 151 m2

Type: Townhouse



Mat Suckling
0394159222



Ellie Kourtessis
0394159222

\$1,200,000 - \$1,300,000

The pinnacle of townhome living set high atop Ashwood hill, this spacious three-bedroom home is light-filled & architecturally designed to create a tranquil & sophisticated abode. A voluminous kitchen makes for a culinarians dream with endless storage & bench space, natural stone finishes, feature cabinetry surfaces, soft-close joinery, & bespoke lighting. Appliances are all inclusive, with state-of-the-art SMEG cooktop, rangehood, oven & dishwasher. Beyond the kitchen is the north-facing living & dining area, which is complemented superbly by a private landscaped oasis fit to accommodate every special occasion with family & loved ones. Modern living has been supremely captured in this rare home, designed to harmoniously connect with its private outdoor space & luscious surrounds. Also included at ground floor is a stand-alone study zone, laundry room, powder room & secure under-stair storage. Each spacious bedroom is defined by generosity of space, authentic materiality & an abundance of natural light. These king-sized bedroom suites are light-filled & exceptionally comfortable, featuring plush carpets for warmth & a beautiful underfoot experience, while an expansive walk-in robe & bathroom ensuite are a feature of the master bedroom. All bathrooms have been purposely designed to reflect a spa-like experience. Appointed without compromise, these areas are exemplified by luxury finishes & considered detailing. White finger tiles bring a vertical quality to the space, juxtaposed by the elegant marble of the vanities. Oval mirrors bring a salon-like quality while stylish brushed nickel tapware & textured wood veneer soften the spaces making them the perfect place for rejuvenation. Defined by a landscape of beautiful greenery & a friendly neighbourhood community, Ashwood is a haven that offers wonderful dining, abundant retail, first-class education and enviable connectivity. Located just 15 minutes from the CBD, this location borders the winding Gardener's Creeks with its wetlands, reserves & sporting ovals all on offer. Just moments from Ashburton Station & the Monash Freeway, getting around is easy, a few minutes' drive & you can be shopping at Chadstone - 'the fashion capital', walking the fairways of Riversdale Golf Course or taking a course at the nearby Holmesglen Tafe or Monash University. SUMMARY: • 3 Bedrooms + 2 Bathrooms + Study + Double Lock-Up Garage • Ducted heating & cooling • Island bench & Smeg appliances to Kitchen • Nuvolato Marble Benchtops • Floor-to-Ceiling Tiles to hotel inspired Bathrooms • Ample storage throughout Contact Mat Suckling (0418 880 062) for more information. PLEASE NOTE:- Every precaution has been taken to establish the accuracy of the above information but does not constitute any representation by the vendor or agent.- Photo ID required at all open for inspections.