

5/1 Post Office Road, Mapleton, Qld 4560



Unit For Sale

Friday, 2 February 2024

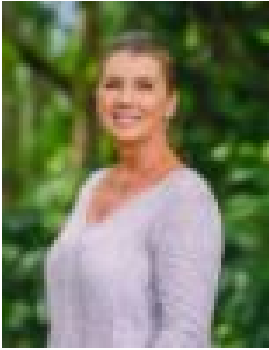
5/1 Post Office Road, Mapleton, Qld 4560

Bedrooms: 1

Bathrooms: 1

Area: 88 m2

Type: Unit



Vanessa Brunton

Inviting Offers

Prime Investment opportunity, "Mapleton Views" freehold shop 5/1 Post Office Road, Mapleton is located in the heart of Mapleton Village and boasts breathtaking views across the Sunshine Coast Hinterland and out to the Ocean. Currently leased 7/4/24 to Tapas 10, a well-established dine-in & takeaway Restaurant and Cafe, this is a fantastic investment opportunity.- Established tenant with lease in place 7/4/24- Net Rental - \$21,120 PA + Outgoings - 85m2 net lettable area- reverse cycle airconditioning plus a feature fireplace- Prime corner location with views to the Sunshine Coast in popular Mapleton village - Car parking is located at the rear- Male, Female & Disabled Toilets located behind shops- "Mapleton Views" is a small complex of only 6 shops managed by Strata Living Body CorporateThe 85m2 NLA consists of a ground-floor kitchen and reception area, outdoor covered dining plus comfortable upstairs dining space with outdoor seating on the verandah with forever views of the Sunshine Coast. This iconic location in Mapleton Village has always been a popular hot spot for both locals and tourists.Contact Vanessa Brunton 0467448850 from VB REAL ESTATE to register your interest or to see how this investment can work for you.