

# 5/11 Cherry Grove, Donvale, Vic 3111

## Townhouse For Sale

Wednesday, 24 April 2024

5/11 Cherry Grove, Donvale, Vic 3111

**Bedrooms: 3**

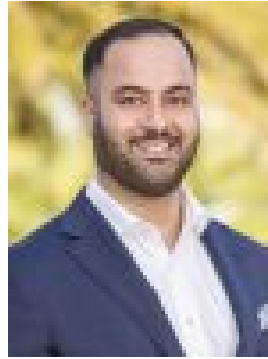
**Bathrooms: 2**

**Parkings: 1**

**Type: Townhouse**



Scott George  
0398428888



Ryan Faridi  
0425440505

**\$770,000 - \$820,000**

This stunning modern town home is a picturesque blend of style and sophistication that sits prominently in a prominent yet private complex. Boasting meticulous modern finishes from beginning to end, a magazine worthy facade immediately draws you in where a conducive ground floor layout includes a convenient study/bedroom option, powder room, laundry and an open plan living, dining and high-end kitchen precinct. Stone benches and stainless steel appliances are hallmarks of an exquisitely finished kitchen that also incorporates a waterfall finished bench and breakfast bar, plus plenty of storage. Additional bedrooms are housed upstairs, the master has its own hotel-style en-suite, while both have access to the matching main bathroom with shower, bath and quality tiling. Beautiful portrait windows allow for an abundance of natural light with a stunning sliding door provides access to an open outdoor entertaining deck that overlooks a landscaped backyard with rear access to the single garage. Split-system reverse-cycle heating/cooling and understairs storage further contributed to a polished property package that could not be better placed. Within walking distance to Mitcham Primary School, Mullauna College, Halliday Park and the Eastlink Trail, close to Mitcham Primary School, the Mitcham Shopping Centre and Mitcham Station, as well as enjoying great access to Mitcham Rd, Springfield Rd, Springvale Rd, Whitehorse Rd and the Melbourne CBD via the Eastern Freeway.