

5/115 Pacific Parade, Dee Why, NSW 2099



Apartment For Rent

Wednesday, 12 June 2024

5/115 Pacific Parade, Dee Why, NSW 2099

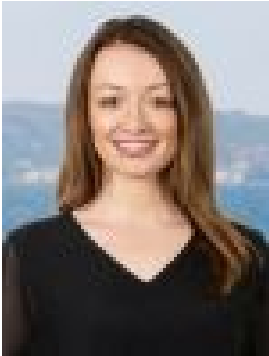
Bedrooms: 1

Bathrooms: 1

Parkings: 1

Area: 55 m2

Type: Apartment



Jessica GibsonClarke
0426733775

\$580 per week

Quick Facts Inspection Time: Sat 8 Jun 2:10 PM - 2:30 PM Available: Friday 28th June 2024 Application: Apply online at: snug.com/apply/raywhitelowernorthshore Lease Period: 12 Months preferred Pets: Considered on application Parking: x1 off street car space

Alive with natural light, this inviting one bedroom apartment indulges in a sunlit north easterly aspect from the second floor of a small security building of just twelve. Set within a 350m level walk to The Strand and beach, there is easy pedestrian and vehicle access from Wheeler Parade. Sharing just a single common wall, freshly painted interiors step out to a protected balcony large enough for barbequing and outdoor entertaining. Looking out to surrounding greenery at every turn, ocean glimpses across Dee Why are captured from the balcony and living room. Open plan in its configuration, the interconnecting living, dining and kitchen benefit from all day northern sun. Well-maintained with an original bathroom, the relaxing bedroom is appointed with mirrored built-in robes.

Accommodation & Features:

- Privately positioned, look out to the treetops
- Practically tiled, perfect for beachside living
- Crisp white colour scheme, ideal dual aspect
- Kitchen layout with window above sink
- Excellent kitchen storage options, tall pantry
- Original mosaic tiling in the basic bathroom
- Bedroom with built-ins opening to bathroom
- Shared laundry facilities in complex
- Off-street car space, driveway off Wheeler Parade
- 350m to beachside café culture and shoreline
- 500m to the Dee Why to Curl Curl Coastal Walk
- 850m to Dee Why Grand shops and city buses

"To apply for this property, please apply online at: snug.com/apply/raywhitelowernorthshore"

FOR FURTHER INFORMATION PLEASE CONTACT: JESSICA GIBSON-CLARKE 0426 733 775 LEWIS COUTTS - 0431 240 333

*All information contained herein is gathered from sources we consider to be reliable. However, we cannot guarantee its accuracy and interested persons should rely on their own enquiries. ** Photography and illustrations are for presentation purposes only and should be regarded as indicative representations only.