

5/12 Donaldson Court, Karama, NT 0812



Sold Unit

Thursday, 24 August 2023

5/12 Donaldson Court, Karama, NT 0812

Bedrooms: 2

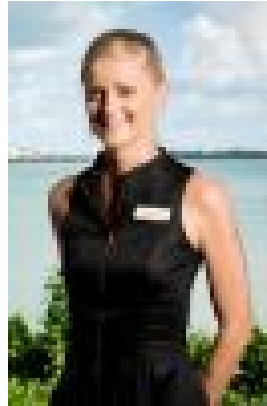
Bathrooms: 1

Parkings: 1

Type: Unit



Korgan Hucent



Tiffany Carr
0408527068

\$230,000

Perfect for downsizers, first homeowners, singles or couples and within an easy walk to Karama's parks, shops and schools. Set in a quiet complex of 6 units, this ground level home has great bones and will thrive on its next owner's personal touch. Features • Open plan living area • Cathedral ceiling • Good size kitchen • 2 bedrooms • Rear courtyard • Internal laundry • Very quiet complex • Undercover carport and porch • Huge potential • Convenient location This delightful unit is situated in a well-maintained complex and off the main road and offers abundant potential for owners and investors alike. From the undercover carport step through the porch to the front door of this most charming home. The high, cathedral ceilings bringing a sense of space to this ground level home. The open plan living and dining area cooled with ceiling fans and air conditioning, is a good size, perfect for a couple, single or small family. The working kitchen extends from the living area, with ample bench space, storage, pantry and double sink. The high ceilings giving a spacious feel. Access to the courtyard is then through the kitchen. You will immediately see the potential in this space and how with simple modifications you could create a cosy entertaining or family area. Stepping back inside, the laundry is then next to the kitchen. Adjacent to it is the main bathroom with shower over bath. You'll see the benefit your personal touch could bring here. The master bedroom is generous in size, with built in robe. Although in need of some updates, this room is bright and well appointed. The second bedroom, also featuring built in robe, has potential to become a lovely home office. This low maintenance, ground level residence is certain to appeal to both owner-occupiers and investors and is the ideal property for those that are looking for a compact home or project. Well located close to public transport, schools, shopping centres and sporting facilities, this home boasts great charm and an opportunity not to be missed. Year Built: 1987 approximately Darwin City Council Rates: \$1,720 per annum approximately Whittles Body Corporate Levies: \$1,110 per quarter approximately Rental Appraisal: \$350 per week approximately