

5 / 12 Rosemont Avenue, Woollahra, NSW 2025



Apartment For Sale

Friday, 10 May 2024

5 / 12 Rosemont Avenue, Woollahra, NSW 2025

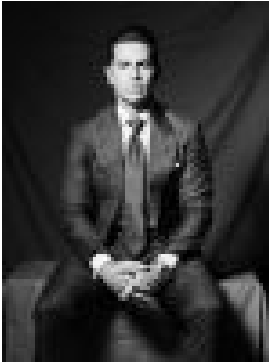
Bedrooms: 3

Bathrooms: 2

Parkings: 2

Area: 145 m2

Type: Apartment



Maclay Longhurst
0283556783



Emily Davidson
0437492378

Buyers guide \$3,000,000

Contemporary designer interiors and leafy vistas bring exceptional style and serenity to the eastern penthouse of Ellington, a classic three-level building in a premier tree-lined avenue of the elite consular enclave with a short walk Queen St village and Edgecliff shopping/trains. Superbly reimagined with marble bathrooms, gourmet island kitchen and high end finishes in light-filled interiors with wide windows framing tranquil treescapes in the living, dining and master bedroom. Enjoy quintessential Woollahra elegance with a garage and car space. * Boutique c1930 building of 6 apartments* Manicured garden entrance to building* Living area with marble gas log fireplace* Dining area seats 8 people, bifold windows* Bespoke marble kitchen, breakfast island * Miele induction cooktop, oven, dishwasher* Integrated fridge/freezer, Miele microwave* Main king-size bedroom with b/ins & ensuite* 2nd & 3rd bedrooms with generous built-ins* 2 luxe marble bathrooms and powder room* Marble laundry, high ceilings, timber floors* Auto-door garage, car space in driveway