

5/122 Pacific Drive, Port Macquarie, NSW 2444



Townhouse For Sale

Friday, 10 May 2024

5/122 Pacific Drive, Port Macquarie, NSW 2444

Bedrooms: 3

Bathrooms: 1

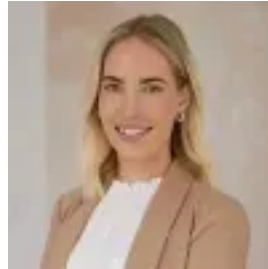
Parkings: 1

Area: 112 m2

Type: Townhouse



Greg Bates
0418112025



Emily Hay
0432629713

\$635,000 - \$660,000

Experience a lifestyle that mirrors a perpetual vacation, where mornings greet you just moments from the stunning panoramas of Harry's Lookout. Surrounded by lush tropical greenery, this three-bedroom townhouse embodies a relaxed resort-style ambience, offering a tranquil retreat amidst nature's beauty. Step into the spacious open-plan living and dining area, where tasteful neutral tones blend seamlessly with the modern bamboo flooring. Find your own quiet retreat on two covered decks, perfect for entertaining or simply enjoying a peaceful moment in the natural splendour surrounding you. The well-equipped kitchen features stainless steel appliances and incorporates a practical laundry area with an extra toilet nearby. Upstairs, explore a timber deck connected to one of the bedrooms, welcoming the invigorating sea breeze that gently sweeps through the entire level. Every bedroom is equipped with fitted wardrobes and ceiling fans to enhance your comfort. The centrally located bathroom, meticulously presented, offers the convenience of both a bathtub and a separate shower. You'll find a parking space conveniently located just steps from your door, while public transport options are easily accessible nearby. Whether you're seeking a lucrative investment opportunity or your own private beach retreat, this property offers everything you need. Act quickly—these beauties don't linger on the market for long!

- Features split system air-conditioning and ceiling fans
- Three decks, bamboo flooring, and ample storage space
- Resort-style living surrounded by lush tropical greenery
- Public transport conveniently accessible at your doorstep
- Tucked away for privacy at the rear of the property
- Just 450m from Shelly Beach, opposite Harry's Lookout

Property Details: Council: \$2,500 p/a approx. Apartment Size: 112 m² Rental Assessment: \$520 - \$550 p/w approx. Strata fees: \$979.16 p/q approx. The information contained in the advertising of this property is based on information provided to the agents, and the vendor and agents expressly disclaim any liability arising therefrom. The accuracy of the information cannot be guaranteed, and prospective purchasers should make their own enquiries and form their own judgement as to these matters.