

**5/236 Slade Road, Bexley North, NSW 2207**



**Apartment For Rent**

Friday, 14 June 2024

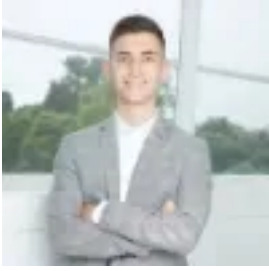
5/236 Slade Road, Bexley North, NSW 2207

**Bedrooms: 2**

**Bathrooms: 1**

**Parkings: 1**

**Type: Apartment**



Anthony Schembri  
0293142100



Katherine McMorrow  
0422851871

**\$640 pw**

Located just 80 meters to Bexley North Station, this sunny two-bedroom apartment is situated on the second floor of a well-maintained block. Recently renovated throughout, enjoy a modern stone kitchen with ample storage space and dishwasher. Offering unparalleled convenience, with an array of restaurants, local parks, schools, and amenities within walking distance.+ Tiled floors throughout the living areas complemented by split air-conditioning+ Stylish kitchen featuring stone bench-tops & ample storage space+ Two bedrooms with built-in robes and balcony access+ Modern bathroom with floor to ceiling tiles+ Internal laundry equipped with a dryer+ Single car space for parking

**TO VIEW PROPERTY register your name and contact details to an inspection time via 'Book Inspection' tab**

**YOU MUST BE REGISTERED TO VIEW THIS PROPERTY. IF YOU ARE NOT REGISTERED, YOU WILL NOT BE ABLE TO VIEW THIS PROPERTY AT THE OPEN HOUSE**

**APPLY NOW BY ENTERING THIS LINK INTO YOUR BROWSER:**<https://www.2apply.com.au/Agency/AgentsandCo>