

**5/238-240 Pacific Highway, Greenwich, NSW 2065**

**Raine&Horne.**

**Apartment For Sale**

Thursday, 9 May 2024

5/238-240 Pacific Highway, Greenwich, NSW 2065

**Bedrooms: 2**

**Bathrooms: 1**

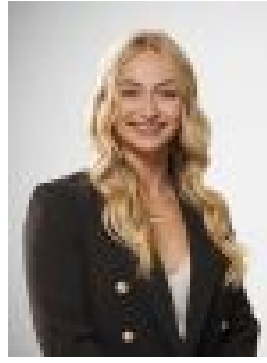
**Parkings: 2**

**Area: 144 m2**

**Type: Apartment**



MaryAnne Fitzgerald  
0283187888



Scarlett Stinton  
0283187888

## **Auction - Guide \$830,000**

Space and convenience don't come any better than this impressively sized double brick apartment with 144.9sqm (approx.) on title, and only one common wall. Designed around a house-like layout, with living and balcony immersed in the tranquility of leafy Ronald Park. Wonderfully attainable as a first home, in a well-maintained boutique block of just 16, with an elevated setting and level pram-friendly street access. Move in ready, with a well-appointed classic kitchen, and a spotlessly presented updated bathroom. Thoughtfully separated from living areas, the bedrooms are luxuriously large, and include built-in robes. The location offers a homelife hub integral for medical staff working in the area. From here it's a level stroll to buses, Royal North Shore and North Shore Private hospitals, and St Leonards station. - Well-maintained double brick security building with level street entry- Stretch out and enjoy spacious integrated living and dining open to the balcony- Large classic kitchen with ample storage, cooktop, two ovens, and dishwasher- Two extra-large bedrooms bright with north sun, built-in robes, balcony to main- Fully tiled updated bathroom with vanity storage and glass shower surround- Vast internal laundry room with dryer, plenty of built-in storage for your extras- Covered parking for two cars, reverse cycle air conditioning, ceiling fans- Moments to City express buses and an easy level walk to St Leonards rail- Stroll to TAFE, Royal North Shore & North Shore Private Hospitals- Close to Crows Nest cafés, boutiques and lifestyle, enjoy Ronald Park- In Greenwich Public School and Hunters Hill High School catchments