

5/25A Muller Road, Hampstead Gardens, SA 5086



Unit For Sale

Thursday, 4 January 2024

5/25A Muller Road, Hampstead Gardens, SA 5086

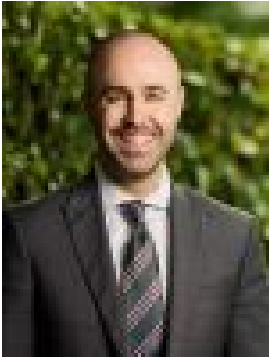
Bedrooms: 2

Bathrooms: 1

Parkings: 1

Area: 71 m2

Type: Unit



Nick Borrelli
0861871302



Andrew Mayne
0434973204

\$320,000 - \$350,000

Discover the charm of this inviting two-bedroom unit, an ideal residence for both owner-occupiers and astute investors. Revel in the picturesque views that adorn this delightful home. Step inside to find a light-filled lounge area offering ample space for relaxation. The two well-proportioned bedrooms include the master bedroom with a built-in robe and a ceiling fan for added comfort. The unit has been adorned with carpets, creating a cozy and welcoming atmosphere. The heart of the home, an updated kitchen, showcases stylish features such as a gas cooktop, chic tiled splashback, and generous cupboard space. The separate dining area provides a perfect setting for enjoying meals with family or friends. The bathroom seamlessly incorporates a laundry for convenience, and a private balcony offers a tranquil space to unwind while overlooking the adjacent oval. Enjoy the added benefits of roller shutters for enhanced privacy and security. Situated in a prime location, this unit comes with a single carport and a rental return of \$320 per week until April 2024 making it a lucrative investment opportunity. Take advantage of the proximity to Greenacres Shopping Centre, various schools, and convenient public transport options, including buses and the Klemzig O'Bahn Interchange. Boasting a strategic position less than 8 kilometers from the CBD, North Adelaide, and the Adelaide Oval Riverbank precinct, 5/25A Muller Road, Hampstead Gardens, is an exceptional property that seamlessly combines comfort, style, and convenience. Don't miss the chance to make it your own! Disclaimer: As much as we aimed to have all details represented within this advertisement be true and correct, it is the buyer/ purchaser's responsibility to complete the correct due diligence while viewing and purchasing the property throughout the active campaign. Property Details: Council | PORT ADELAIDE ENFIELD Zone | GN - General Neighbourhood House | 71sqm (Approx.) Built | 1971 Council Rates | \$TBC pa Water | \$TBC pa ESL | \$TBC pa