

5/276-278 Pacific Highway, Greenwich, NSW 2065 **Raine&Horne.**

Apartment For Sale

Thursday, 16 November 2023

5/276-278 Pacific Highway, Greenwich, NSW 2065

Bedrooms: 3

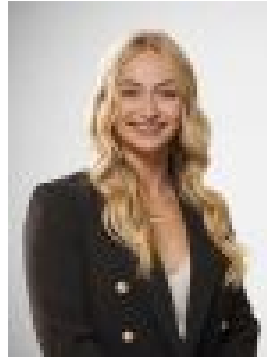
Bathrooms: 1

Parkings: 1

Type: Apartment



MaryAnne Fitzgerald
0283187888



Scarlett Stinton
0283187888

Auction - Contact Agent

Immersed in greenery with privacy that's so rarely offered in apartment living, this captivating home basks in a peaceful setting at the rear of the popular 'Chelsea' building. Renovated throughout and poised against a lush garden backdrop, it provides an idyllic retreat or investment for homebuyers who value quality, size and convenient city living. Flaunting a super-sized living area, CaesarStone kitchen and ease of entry from the covered parking, take advantage of express city buses at your door, stroll to St Leonards station and indulge in the enviable village lifestyle of neighbouring Lane Cove.- Ultra-private rear-of-block corner apartment swathed in treetop vistas- Expansive open plan living flowing to an enclosed garden-view balcony- Modern CaesarStone kitchen equipped with quality stainless steel appliances- Solid 40mm waterfall benchtops, dishwasher and polyurethane cabinetry- Separate meals area, wraparound picture windows and stone stacker feature wall- Three double bedrooms includes the option of a home office- Oversized master bedroom enjoying a northerly aspect and built-in robes- Fully tiled bathroom with rainshower and internal laundry facilities- New flooring, reverse cycle air conditioning and unrivalled privacy- Manicured communal gardens and city buses at the door- Easy access from the undercover parking and plenty of off-street parking- Stroll to St Leonards and only moments to Lane Cove and Artarmon villages