

5/30 Park Street, Moonee Ponds, Vic 3039



Sold Villa

Thursday, 19 October 2023

5/30 Park Street, Moonee Ponds, Vic 3039

Bedrooms: 2

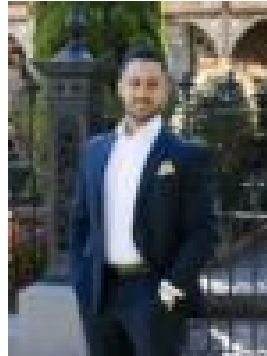
Bathrooms: 1

Parkings: 2

Type: Villa



Stefan Stella
0422093149



Ricardo Rodrigues
0407806893

\$870,000

With its spacious design, impressive renovations and enviable Park Street location, this secluded villa delivers a low-maintenance lifestyle of absolute quality and unbeatable inner-urban convenience. Filled with natural light, the home's refined interior showcases 2 bedrooms (large master) with built-in robes both serviced by a deluxe bathroom with stone-top vanity, frameless shower and separate WC. Spacious and versatile, the open-plan living/dining area is adjoined by a stone-bench kitchen complete with soft-close drawers, ample cupboard space, stainless-steel cooking appliances (900mm) and dishwasher. Flawlessly presented, this vibrant villa also includes a dedicated study alcove with workstation and full-size modern laundry, as well as ducted heating, split-system a/c (x2), LED downlights, double blinds and solid hardwood floors. Complementing the first-class interior is a sizeable courtyard including paved entertaining area with remote-control Louvre House roof, plus rear access into the garage (also remote-control). The open spaces of Queens Park at the end of the street, it's also walking distance to trains, trams and buses, Puckle Street cafes, popular bars, restaurants and Moonee Ponds' thriving retail precinct, as well as easy access to the area's elite private schools. Highlights: - 2 bedrooms (large master) with built-in robes- Deluxe bathroom and separate WC- Spacious open-plan living/dining area- Stone-bench kitchen with quality appliances- Study alcove with workstation- Courtyard with paved entertaining area- Remote-control Louvre House roof- Remote-control garage All information about this property has been provided to Ray White by third parties. Ray White has not verified the information and does not warrant its accuracy or completeness. Parties should make and rely on their own enquiries in relation to this property.