

5/31 Pine Avenue, Elwood, Vic 3184

Townhouse For Sale

Monday, 22 January 2024

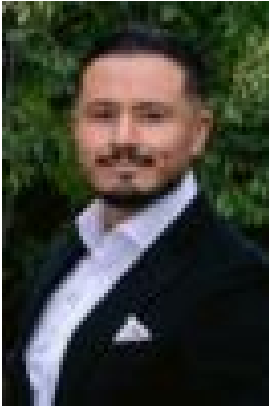
5/31 Pine Avenue, Elwood, Vic 3184

Bedrooms: 3

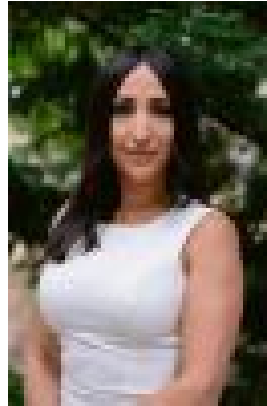
Bathrooms: 2

Parkings: 2

Type: Townhouse



Anthony Orellana
0468629408



Kimberley Galea
0478073711

\$1,500,000 - \$1,650,000

Positioned only moments from picturesque Elwood Beach, Main Road Real Estate proudly presents this elegantly designed triple-storey town residence within the Pine Ave development, a collaboration between renowned architects Cera Stribley, and interiors by The Stella Collective, reimagining Elwood's iconic streetscape in a twenty-first century inspired beachside art-deco style. At ground level, gentle curvature beckons you inside, leading to a sprawling open-plan living and dining area. Set atop beautiful terrazzo tiling, natural light seamlessly filters throughout the space, with a light source at either end. Enjoy casual meals and entertaining, either indoors or outdoors, with banquette seating doubling as extra storage, or outside in the tranquil north-facing courtyard, framed by lush greenery. The galley-style kitchen showcases high-end appliances, including SMEG gas cooktop and under-bench oven, Liebherr integrated fridge and freezer, dish drawer dishwasher, and Billi boiling and chilled water filter, complemented by porcelain stone benchtops and floor-to-ceiling storage, encased in finger-recessed joinery. Ascending to the first floor, two well proportioned sleep sanctuaries are each set atop beautiful timber flooring and boast significant storage, seen through floor-to-ceiling built in robes, plus custom joinery for additional space and practicality, ideal for use as a TV stand. Complementing the two, a centralised bathroom is nestled between. Drawing inspiration from hotel bathrooms, comprising an oversized shower with rain head, sleek toilet and floating vanity, while the European laundry is surreptitiously tucked away in this space. On the top floor, the palatial master suite awaits. An expansive indoor-outdoor space is brimming with natural light in its north-facing position, softened by crisp white sheers, primed for resort-style living. With breathtaking views from the balcony, particularly at sunrise and sunset, plus an outdoor shower, offering a personal oasis to relax and unwind in. The adjoining ensuite offers a choice of freestanding bathtub or oversized glass shower, plus dual vanity, and sleek toilet. The inclusion of a skylight to the ensuite sees natural light flood in through the day, as well as the stars at night. Other features include two basement car parks in a stacker arrangement, separate storage cage, and communal workshop, allowing for projects to be completed without impinging upon living spaces. Offering a coveted bayside lifestyle only minutes from the beach, soak up the sun in summer and experience peaceful walks in winter, enjoy curated dining culture in Elwood Village, spoiled for choice with cafes, restaurants and bars, along with specialty grocers, while Elwood and Elsternwick Parks are also nearby.