

5/354 Nepean Highway, Chelsea, Vic 3196



Unit For Sale

Friday, 3 November 2023

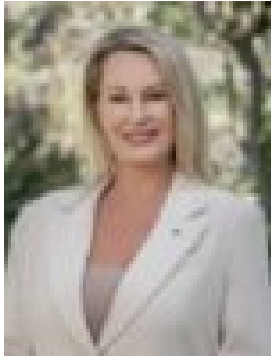
5/354 Nepean Highway, Chelsea, Vic 3196

Bedrooms: 2

Bathrooms: 1

Parkings: 1

Type: Unit



Tanja Neven Jones
0408664429

\$480,000 - \$528,000

Fabulously positioned along a coastal corridor that places Chelsea station village within metres, this property offers the opportunity to live around the corner from one of Melbourne's most well-known beaches. A free-flowing configuration moves seamlessly between the open-concept living & dining domain and sunset courtyard. This interplay between inside and out favours the entertainer, while contributing to the property's light & airy atmosphere. The soft, neutral colour palette is punctuated by the natural textures of the engineered flooring and bespoke kitchen cabinetry. Clean lines and open space curate a sleek and modern aesthetic. Floor plan features include two bedrooms with BIR, bathroom/laundry, storage shed, and carport. Further highlights include a sunrise patio in the primary bedroom, courtyard kitchenette, and living room split-system A/C. This property is situated in the heart of Chelsea within walking distance of retail districts, local wetlands, and the waterfront.