

**5/37 Brickfield Road, Aspley, Qld 4034**

GRACZYK THOMPSON

**Apartment For Rent**

Thursday, 9 May 2024

5/37 Brickfield Road, Aspley, Qld 4034

**Bedrooms: 3**

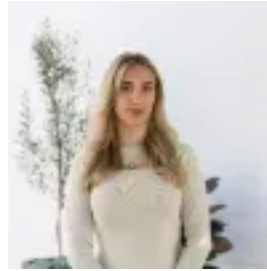
**Bathrooms: 2**

**Parkings: 2**

**Type: Apartment**



Blair Mutch  
0737067248



Ashleigh Leavitt  
0737067248

## \$700 per week

Step into modern luxury with this stunning apartment located in Aspley, just a stone's throw away from parks, shopping precincts, dining delights, and excellent public transport links, all within a mere 12 kilometers to Brisbane CBD. As you enter, be captivated by the soaring double-height ceilings in the living area, creating an expansive and airy feel. This residence boasts three spacious bedrooms, all recently carpeted and equipped with air conditioning for year-round comfort. The master bedroom, a true sanctuary, features a large walk-in robe and ensuite, offering privacy and elegance on the upper level. The heart of this home lies in its modern kitchen, complete with an electric cooktop, dishwasher, breakfast bar, and ample storage, making meal prep a delight. Entertain or unwind on the oversized covered deck/balcony that seamlessly extends from the living area, perfect for enjoying Queensland's beautiful weather year-round. Bedrooms 2 and 3 also feature air conditioning and built-in robes, with the main bathroom conveniently located adjacent to them on the main level. Practicality meets luxury with an enormous secure storage room, NBN readiness, two side-by-side car spaces, and fly screens throughout for added comfort. This corner unit bathes in natural light and enjoys excellent air ventilation, ensuring a pleasant ambiance throughout. The complex itself is a boutique gem, offering onsite visitor parking and direct access to walking paths and green spaces for leisurely strolls or outdoor activities. For those commuting or exploring the city, this location shines with a plethora of public transport options, including inbound and outbound buses on Gympie Rd, Carseldine Train Station just 1.2km away, and proximity to major shopping hubs like Aspley Hypermarket and Westfield Chermside. With Brisbane Airport less than 20 minutes away, convenience meets lifestyle in this vibrant, pet-friendly community (upon application and approval). Don't miss the opportunity to make this modern haven your own!

**Apartment Features:-** Soaring double height ceilings in the living area- 3 spacious bedrooms all with new carpet and air-conditioning- Master bedroom with large walk-in-robe and ensuite on the upper level- Modern kitchen complete with; electric cooktop, dishwasher, breakfast bar and lots of storage- Oversized covered deck / balcony flowing effortlessly from the living area- Bedrooms 2 & 3 both features air-conditioning and built-in-robos- Main bathroom accommodates guests and is adjacent to bedrooms 2 and 3 on the main level- Enormous secure storage room- NBN ready- 2 side by side car spaces- Corner unit with lots of natural light and great air ventilation- Fly screens throughout- Pet Friendly! (upon application and approval)

**Complex Features:-** Boutique complex of only units- Onsite visitor parking- Direct access to walking paths and green spaces

**Location and Transport:-** A plethora of public transport options with inbound and outbound buses on Gympie Rd- Carseldine Train Station 1.2km- Aspley Hypermarket a mere 600m away with Westfield Chermside only 3km's- Less than 20 minutes to Brisbane Airport- Brisbane CBD 12km

Please contact our Leasing Manager Blair on 0468 791 950 or [blair@gtpartners.com.au](mailto:blair@gtpartners.com.au) to book an inspection of this property. Please ensure you register for any inspection you are wanting to attend so that should we need to cancel the inspection for any reason, we are able to notify you of this change.\* Every care and due diligence has been taken in the preparation of this listing. The agency and owner assume no responsibility for the accuracy of the content, and encourage all prospective tenants to conduct their own research.