

**5/44 The Esplanade, Burleigh Heads, Qld 4220**

Coastal

**Apartment For Sale**

Tuesday, 12 March 2024

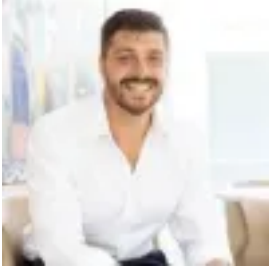
5/44 The Esplanade, Burleigh Heads, Qld 4220

**Bedrooms: 4**

**Bathrooms: 3**

**Parkings: 1**

**Type: Apartment**



Sean Lewis

0755266999

## Auction

'Burleigh Bon Sol', an exquisite dual-key penthouse retreat nestled in the heart of Burleigh Heads. This luxurious property offers a unique blend of elegance and convenience, providing residents with the ultimate beachside lifestyle in one of the Gold Coast's most sought-after locations. Comprising two separate two-bedroom penthouses, 'Burleigh Bon Sol' epitomizes oceanfront luxury. With meticulously appointed interiors and stunning views of the coastline, this residence offers a prestigious living experience just steps away from the golden sands of Burleigh Beach. Additionally, its prime location places it only 50 meters from James Street's vibrant shopping and dining precinct, ensuring residents have easy access to a plethora of amenities and entertainment options. Beyond the unparalleled beauty of its surroundings, Burleigh Heads boasts a rich cultural heritage and a vibrant community spirit. Residents have the opportunity to immerse themselves in the laid-back coastal lifestyle, where days are spent basking in the sun on the beach or exploring the lush greenery of Burleigh Heads National Park. In essence, 'Burleigh Bon Sol' offers more than just a place to live; it provides a gateway to a lifestyle that embodies the essence of coastal living. Whether you're seeking a peaceful retreat by the sea, an active outdoor lifestyle, or a vibrant community to call home, Burleigh Heads offers it all and more.

- Both completely renovated in 2022 with high-end materials and luxe inclusions
- Surround sound systems, bespoke cabinetry and ducted-air conditioning
- Penthouse A offers a sun-drenched balcony with views over Justin Park
- Penthouse B offers an enclosed entertaining zone with built-in BBQ kitchen
- Designer chef's kitchen stuns with a suite of premium Smeg appliances
- Palatial ensuite master and walk-in robe
- Oceanfront study nook, chic powder rooms/bathrooms
- Ground floor lock up garage
- 1/5 units on 534m<sup>2</sup> block
- Electric blinds, induction cooktops, internal laundries, built-in bunk beds
- Situated across from the Mondrian a \$450m 6 star hotel, with world class amenities.
- Easy flat walk to thriving cafe / bar culture and boutique shopping in James Street
- World-class point break surf and safe patrolled beach
- Your local surf club is Mowbray Park and was founded in 1923
- Enjoy as a 4 bed penthouse or as separate two bedroom self-contained apartments
- Stroll to beach, Burleigh Pavilion, Rick Shores, James Street, Tarte Bakery

Disclaimer: We have in preparing this information used our best endeavours to ensure that the information contained herein is true and accurate but accept no responsibility and disclaim all liability in respect of any errors, omissions, inaccuracy or misstatements that may occur. Prospective purchases should make their own enquiries to verify the information contained herein.