

**5/53 Elanda Street, Sunshine Beach, Qld 4567**



**Unit For Sale**

Friday, 5 April 2024

5/53 Elanda Street, Sunshine Beach, Qld 4567

**Bedrooms: 3**

**Bathrooms: 3**

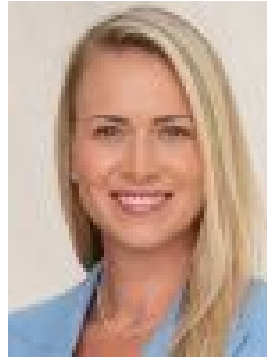
**Parkings: 2**

**Area: 358 m2**

**Type: Unit**



Roark Walsh  
0437447804



Rebekah Offermann  
0413044241

## Auction

Is your heart set on the prize of a spectacular penthouse, more a skyhome on top of the world in the heart of Sunshine, with incomparable 360° views, from the headland of Noosa National Park in north Sunshine Beach, sweeping across the luminous turquoise Coral Sea, where white-tipped waves are off the hook, south to Point Cartwright and beyond across the hinterland to Mt Cooroy? Yes, this is true dress circle, plus it is mere minutes via a neighbouring pathway to toes-in-the-sand, also café central of vibrant Sunshine Beach village. When the lift door opens inside the penthouse, be instantly besotted. It is a true homage to uber contemporary art and design, throughout the amazingly generous and well-appointed open plan living areas. Admire sumptuous white leather armchairs and sink-into sofas, decadent rugs, beautiful artworks, designer cabinetry features for artifacts, books and memorabilia, also a dedicated desk space with the view, and so much more. Thanks to lofty ceilings, bright natural light shadow dances over the marble flooring and tall walls of glass seemingly disappear and morph from indoors out, to two of four undercover terraces. Entertaining options are aplenty of course, for enjoying the carefree spirit of each season with a brilliant cocktail of salty breezes, and the sun-kissed blues, greens and sand of the eastern seaboard. Commensurate is the galley kitchen with white stone cabinetry including an angular island breakfast bar with three bright blue hand-blown pendants, walk-in pantry, high-end appliances and all the accoutrement seven Jamie Oliver would love – view included. An undercover terrace on the southside has an outdoor kitchen and there's also a barbeque on the terrace off the dining room. Another unifying star of the penthouse is the premier king suite. Think postcard views from bed. From the north-east-facing terrace watch the sun turn into an endless blue horizon, and from the free-standing deep bath tub in the lavish ensuite, think forever holidays. Dreamtime central continues with two additional bedrooms. A king suite with terrace access has a walk-in robe, also marble-tiled ensuite; the third large bedroom has a built-in robe and an adjoining bathroom. Laundry and linen storage are opposite. Given the Alpha on Elanda, has arguably the highest elevation of any building in close proximity to Sunshine village and the Coral Sea, the piece de resistance is the rooftop terrace. Expect oohs and aahs with those 360° degrees, languishing on sun lounges under shade sails and drinking in the views from the spa tub. At the front of the boutique complex of five is a classy glistening 16m lap pool, spa and sun terrace with giant white pots of dracaena and grass trees, while the delights of water with waves are about two minutes away at Sunshine Beach. It includes a patrolled area, popular surf break and nearby is the Sunshine Beach Surf Club. Also within walking distance is the famous Noosa National Park, a haven for hikers, bushwalkers, photographers and more. The acclaimed Village with myriad cafes, bars, restaurants and boutiques is also two minutes away. "What a privileged Sunshine Beach address surrounded by innumerable natural assets" comment Tom Offermann Real Estate agents Rebekah Offermann and Roark Walsh "Live love luxury to the max in dress circle Sunshine Beach and when it comes to outstanding returns, you can reach for the stars with this outstanding investment opportunity." 5/53 Elanda Street Sunshine Beach Bedrooms 3 | Bathrooms 3 | Car 2 | Auction: Saturday 4 May 2024 2pm

**Facts & Features:**

- Penthouse Area: 358m<sup>2</sup>
- Terraces: rooftop 4.2mx9m w spa tub & 360° views nth from Noosa National Park Headland w giant pots; NE-facing 4mx2.3m + 8.2mx2.5m + 8.2mx2.6m undercover off living, dining & 2 bedrooms; sthside 8.3mx2.4m undercover w outdoor kitchen
- About: life from basement/front entry direct to penthouse; marble flooring; lofty ceilings; ducted air/ huge fans; secure basement w 2 car space + 2 storerooms for kayak, surfboards, bikes; living w custom designer cabinetry & features for artifacts, books, TV & memorabilia; dedicated desk space w view; 3-bedrooms; white w shades of blue palette; premier king suite w terrace access, WIR w doors; marble tiled ensuite to view w 2-basin cabinetry & spa bath; 2nd king w terrace access, WIR & ensuite; 3rd large w BIR & adjoining bathroom; laundry & linen storage opposite
- Kitchen; L-shaped galley w white stone 2-pac cabinetry incl 3m angular island breakfast bar w 3 blue hand-blown pendants; walk-in pantry; integrated Sub-Zero fridge/freezer; Neff oven & induction cooktop; Miele dishwasher; Zip Hydra tap; outdoor kitchen w Prima BBQ, wine fridge & sink
- Inventory: Negotiable
- Alpha on Elanda: boutique complex of 5; 16m-lap pool, spa & sun terrace w giant white pots of dracaena & grass trees