

# 5/677 Oxley Road, Corinda, Qld 4075

## Sold Unit

Saturday, 17 February 2024

5/677 Oxley Road, Corinda, Qld 4075

**Bedrooms: 2**

**Bathrooms: 1**

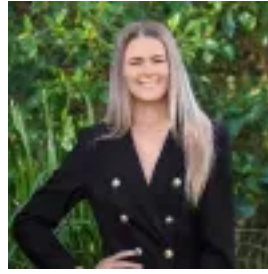
**Parkings: 1**

**Area: 88 m2**

**Type: Unit**



Deanne Hansom  
0739061366



Ashleigh Hansom  
0739061366

**\$435,000**

An exciting opportunity awaits. Are you looking for your first home or investment where you can set and forget? Located in the tightly held Corinda precinct is this 2-bedroom light infused apartment that is ideal for the investor with a long-term tenant or for those who wish to occupy. This apartment is a lovely surprise with plenty of open plan living space, combined with 2 generous bedrooms. The location will delight those who like to have an easy commute by train or bus as these are located a short stroll from your door, along with the local shops, restaurants, and schools. Body corporate fees are affordable and there is an allocated courtyard area within the complex. Property Features Open plan living area, with air conditioning and security screens on the numerous windows Quaint dining area off the kitchen Kitchen area with good storage, stainless steel oven, glass cooktop and includes dishwasher and views over the rear courtyard area 2 generous size bedrooms with built in robes, & ceiling fans. Single lockup garage with extra length for storage and laundry at the rear & remote access Allocated courtyard with cement slab area ready for the outdoor BBQ if you prefer. Bathroom has small base bath for children Full security screens on all windows. Currently tenanted with lease expiring on the 15/10/24 Rent currently \$400.00 per week Rate's & Fee's: Estimated Rental Return: \$495 - \$535 Rates: Approx \$480.95 Per Quarter Body corporate fees: Approx \$759.72 Per Quarter Location tips Walk to the Corinda train station or to the corner and catch the bus Walk around the corner to the coffee shop or a selection of cafes / restaurants and the local shopping centre is approx. 5min\* walk away Corinda State High School is approx. 5-10min\* walk Sherwood State School is 15 min\* walk or minutes by car Oxley Golf Course minutes from your door Numerous parks and cycle / walk paths near the Oxley creek or down by the Brisbane River minutes from your door Brisbane Market place and Indooroopilly Shopping Centre approx. 6-7 min\* from your door Contact Team Hansom Deanne Hansom | 0403 066 191 Ashleigh Hansom | 0448 742 538\* = Approximate