

5-7 Gleneagle Court, Bonogin, QLD, 4213

Sold House

Tuesday, 18 April 2023

5-7 Gleneagle Court, Bonogin, QLD, 4213

Bedrooms: 4

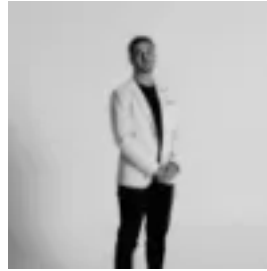
Bathrooms: 2

Parkings: 2

Type: House



Taylor Davies



Alex Ragenovich
1300599528

Family Lifestyle Residence In Quiet Cul De Sac

Nestled in a tightly held cul de sac and perfectly positioned to admire the stunning backdrop of Bonogin Valley Bushland Park, this expansive lifestyle property set upon a superb 2500m² (approx.) allotment is undeniably picturesque and presents a fantastic opportunity for the entire family.

The sophisticated and well-appointed ranch-style residence invites glorious vista views from every vantage point. Beautifully presented and featuring expansive open plan living and dining complemented by a central gourmet kitchen featuring custom cabinetry and servery. With a flexible floorplan offering abundant scope for future personalisation, a sizable living/dining space opens effortlessly to a covered alfresco overlooking private surrounds and sparkling inground pool. The accommodations zone comprises four well-presented bedrooms, including a master suite with walk-in robe, full ensuite and direct outdoor access, whilst a central family bathroom offers separate shower and corner spa. A fourth bedroom/study provides flexible options for those working from home or needing guest accommodations. Overflowing with features that include a separate laundry, solar panels, double garage with internal access, all set on an expansive allotment with impressive street frontage.

- Expansive 2500m² garden allotment
- Comfortable bedrooms including master with WIR and full ensuite
- 4 th bedroom/study provides versatility
- Sparkling inground pool in private surrounds
- Idyllic lifestyle location in quiet cul de sac

Positioned in a coveted blue-chip location within minutes of local shopping, and just a short drive to Robina Town Centre, the property offers the quiet, country way of life within moments of the city and close to a selection of quality education options, including Somerset College and King's Christian College. With the convenience of the Pacific Motorway offering direct connections with the Gold Coast and Brisbane and access to airports and the New South Wales border, this is a lifestyle property without compromise.