

5/85 O'Sullivan Road, Rose Bay, NSW 2029

PPD REAL ESTATE

Apartment For Sale

Thursday, 7 March 2024

5/85 O'Sullivan Road, Rose Bay, NSW 2029

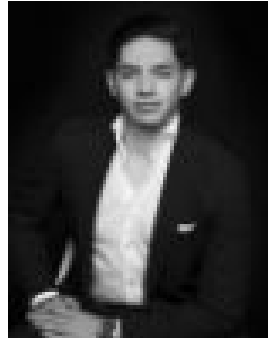
Bedrooms: 2

Bathrooms: 1

Type: Apartment



Sean Poche
0283551136



Nate Chacon
0283551143

Auction 10 April

A north-east corner position in the secure Knowle Court bathes the interiors of this spacious Art Deco apartment in sunshine with views over Woollahra Golf Course as a tranquil backdrop. Set on the mid floor of a well-kept block of 12, the oversized two-bedroom apartment makes an ideal low-maintenance semi alternative in a fantastic location just 300m to the harbour promenade. A roomy 82sqm approx layout with only one common wall features a separate sunroom ideal as a work from home space or nursery with high ceilings enhancing the sense of space. With Plumer Road village and Bitton Rose Bay just around the corner, it's an easy 650m walk to the ferry wharf for a relaxed trip into the city and a short walk to celebrated harbourfront restaurants, sailing clubs, boutique harbour beaches and recreational parkland. - Knowle Court, a c1940 block of 12 - North-east corner on the mid floor - Great layout with 2 private bedrooms - Both with built-in robes, high ceilings - Sun-filled study with a leafy outlook - Big windows bring in the harbour breeze - Large living room bathed in sunshine - Sunny gas kitchen with a breakfast bar - Bosch dishwasher, ample bench space - Bright bathroom, hidden internal laundry - Double glazed windows, 1 common wall - Ideal first home or a prime investment - Well-presented with scope to add value - Footsteps to Plumer Road cafes and delis - Level 650m walk to Rose Bay Wharf - Catch the commuter ferry into the city - Walk to tennis courts and boutique beaches - 750m to Catalina, 800m to The Boathouse