

5 Callistemon Close, North Epping, NSW, 2121

Sold House

Thursday, 7 September 2023



5 Callistemon Close, North Epping, NSW, 2121

Bedrooms: 5

Bathrooms: 2

Parkings: 4

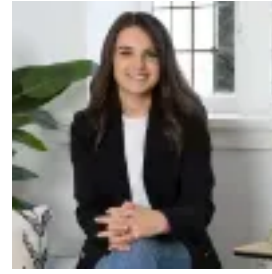
Type: House



James Ramsay



Douglas Kim



Chloe Mawass
0288661500

Dual driveway access from 2A Constance Close Epping

Enhanced throughout by beautiful leafy outlooks, this quality 1980 built home offers comfortable family living across a spacious and flexible layout. Set in a blue-chip location, and within the catchment for Epping Boys & Cheltenham Girls and located only 1.1km to Epping Station.

- Space to build a street front granny flat facing Constance Close
- Bright and spacious living area connects to the private deck
- Paved outdoor entertaining area overlooks the large backyard
- Modern Jarrah kitchen with extensive storage space
- Five bedrooms, master impresses with walk-in robe and ensuite
- Versatile lower level with rumpus room, study and storage
- Ducted air conditioning throughout, laundry with extra w/c
- Double lock-up garage, plus extensive home business area
- 1.2 km from North Epping village and 100m from Epping Oval
- 900m to Epping Public school and catchment for Epping North Public School, Epping Boys, Cheltenham Girls, and Carlingford High