

5 Cameron Way, Mount Eliza, Vic 3930

Sold House

Thursday, 17 August 2023

5 Cameron Way, Mount Eliza, Vic 3930

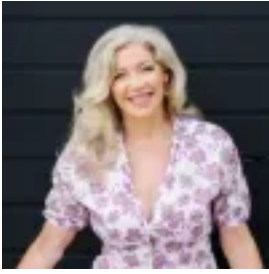
Bedrooms: 5

Bathrooms: 2

Parkings: 2

Area: 1870 m2

Type: House



Liz Todd
0397877171



Meg Emond
0397877171

Contact agent

On almost half an acre gazing out across the coastal panorama to bay glimpses beyond, this two-storey residence sits amid a playground of indulgences to delight all ages, whether relaxing by the pool or soaking in the spa, working up a sweat on the all weather tennis court with roll-away net, sunset cocktails on the deck or entertaining with friends beneath the court-side lounge and bungalow. Adjacent parkland ensures your views are protected and offers an additional green space for a walk, game of cricket or kick of the football. Imbued with a relaxed resort-style ambience bolstered by a high-end contemporary coastal elegance, this breathtaking recently renovated and enhanced modern home delivers the pinnacle of perfection for lifestyle-loving families. Setting the mood for every occasion, the interior reveals beautiful and generously appointed living areas, on both levels plus a separate snug or sitting room with a gas log fire to take in the views. Recently added is an executive office/study on the ground floor, boasting a kitchenette/bar, new wool carpeting and easy entry from the front driveway to work privately from home. At the apex, a gourmand's kitchen anchors the primary living zone with a colossal 80mm cascading stone island and a fleet of integrated Miele appliances, including two ovens, induction cooktop, dishwasher, microwave oven and coffee machine, along with a fully integrated Liebherr fridge/freezer/icemaker, in-floor vac, and Zip hot water tap. An array of glass doors invite you out to the wraparound balcony to soak up heavenly sunsets over the bay, while two banks of bifold doors open to an alfresco deck overlooking the tennis court to dine outdoors beneath the twinkling festoon lights. The lavish master bedroom with beautiful wall panelling boasts a walk-in robe and elegant ensuite with sliding glass shower and floor-to-ceiling tiling in this exceptional home, whilst a full second bathroom with separate toilet services the four spacious bedrooms downstairs. Featuring 12-foot ceilings, parquet oak floors, electric heated pool, ducted heating, evaporative cooling, split-systems, and over-height double garage with ample storage and internal access, remote controlled security gates, a low maintenance and landscaped garden, privacy and quiet enjoyment of your resort lifestyle is assured. Only moments to Mt Eliza Village and Mornington plus Mount Eliza Primary School, Peninsula Grammar, Kunyung Primary, the village and beaches, this incredible home is a must and delight to inspect! EXPRESSIONS OF INTEREST: CLOSING DATE 4pm 31/7/23. Offers will be considered prior to closing date.